

Instruction Manual



P/N 30-3902 2001-2005 Porsche 996 Turbo Manual Transmission Plug & Play Adapter Harness



STOP!

THIS PRODUCT HAS LEGAL RESTRICTIONS.
READ THIS BEFORE INSTALLING/USING!

THIS PRODUCT MAY BE USED SOLELY ON VEHICLES USED IN SANCTIONED COMPETITION WHICH MAY NEVER BE USED UPON A PUBLIC ROAD OR HIGHWAY, UNLESS PERMITTED BY SPECIFIC REGULATORY EXEMPTION. (VISIT THE "EMISSIONS" PAGE AT [HTTP://WWW.SEMASAN.COM/EMISSIONS](http://www.semasan.com/EMISSIONS) FOR STATE BY STATE DETAILS.)

IT IS THE RESPONSIBILITY OF THE INSTALLER AND/OR USER OF THIS PRODUCT TO ENSURE THAT IT IS USED IN COMPLIANCE WITH ALL APPLICABLE LAWS AND REGULATIONS. IF THIS PRODUCT WAS PURCHASED IN ERROR, DO NOT INSTALL AND/OR USE IT. THE PURCHASER MUST ARRANGE TO RETURN THE PRODUCT FOR A FULL REFUND.

THIS POLICY ONLY APPLIES TO INSTALLERS AND/OR USERS WHO ARE LOCATED IN THE UNITED STATES; HOWEVER CUSTOMERS WHO RESIDE IN OTHER COUNTRIES SHOULD ACT IN ACCORDANCE WITH THEIR LOCAL LAWS AND REGULATIONS.

WARNING: This installation is not for the tuning novice! Use this system with **EXTREME** caution! The AEM Infinity Programmable EMS allows for total flexibility in engine tuning. Misuse or improper tuning of this product can destroy your engine! If you are not well versed in engine dynamics and the tuning of engine management systems **DO NOT** attempt the installation. Refer the installation to an AEM-trained tuning shop or call 800-423-0046 for technical assistance.

NOTE: All supplied AEM calibrations, Wizards and other tuning information are offered as potential starting points only. **IT IS THE RESPONSIBILITY OF THE ENGINE TUNER TO ULTIMATELY CONFIRM IF THE CALIBRATION IS SAFE FOR ITS INTENDED USE.** AEM holds no responsibility for any engine damage that results from the misuse or mistuning of this product!

AEM Performance Electronics
AEM Performance Electronics, 2205 126th Street Unit A, Hawthorne, CA 90250
Phone: (310) 484-2322 Fax: (310) 484-0152
<http://www.aemelectronics.com>
Instruction Part Number: 10-3902
Document Build 11/4/2015

OVERVIEW

The 30-3902 AEM Infinity Adapter Kit was designed for the 2001-2005 Porsche 996 Turbo with manual transmission. This is a true standalone system that eliminates the use of the factory Porsche DME (ECU). The use of this adapter makes the kit “plug and play” so no cutting or splicing wires is necessary. The base configuration files available for the Infinity EMS are starting points only and will need to be modified for every specific application. Included in these instructions are descriptions of important differences between using the factory Porsche DME and using the AEM Infinity ECU.

The available AEM Infinity EMS part numbers for this adapter kit are:

- 30-7109 INFINITY-8

NOTE: The Porsche Infinity-8 EMS has 6 ignition coil outputs and 10 injector outputs.

GETTING STARTED

Refer to the **10-7100 for EMS 30-7100 Infinity Quick Start Guide** for additional information on getting the engine started with the Infinity EMS. Porsche 996 Turbo base sessions are located in C:\Documents \AEM\Infinity Tuner\Sessions\Base Sessions

DOWNLOADABLE FILES

Files can be downloaded from www.aeminfinity.com. An experienced tuner must be available to configure and manipulate the data before driving can commence. The Quick Start Guide and Full Manual describe the steps for logging in and registering at www.aeminfinity.com. These documents are available for download in the Support section of the AEM Electronics website: <http://www.aemelectronics.com/products/support/instructions>

Downloadable files for 2001-2005 Porsche 996 Turbo

- 7109-XXXX Infinity-8 Porsche 996 Turbo (XXXX = serial number)

NOTE: The Flash Enable connector (described in the following pages) MUST be “jumped” in order to connect to the Infinity and load the initial firmware file. Subsequent firmware upgrades will not require this step.

- Ignition key OFF
- Insert zip-tied jumper shunt connector into Flash Enable connector
- Ignition key ON (RUN position)
- Infinity Tuner | Target | Upgrade Firmware... | Upload downloaded .pakgrp file
- Disconnect Flash Enable jumper connector
- Infinity Tuner | File | Import Calibration Data | Select appropriate base session file

INFINITY CONNECTORS

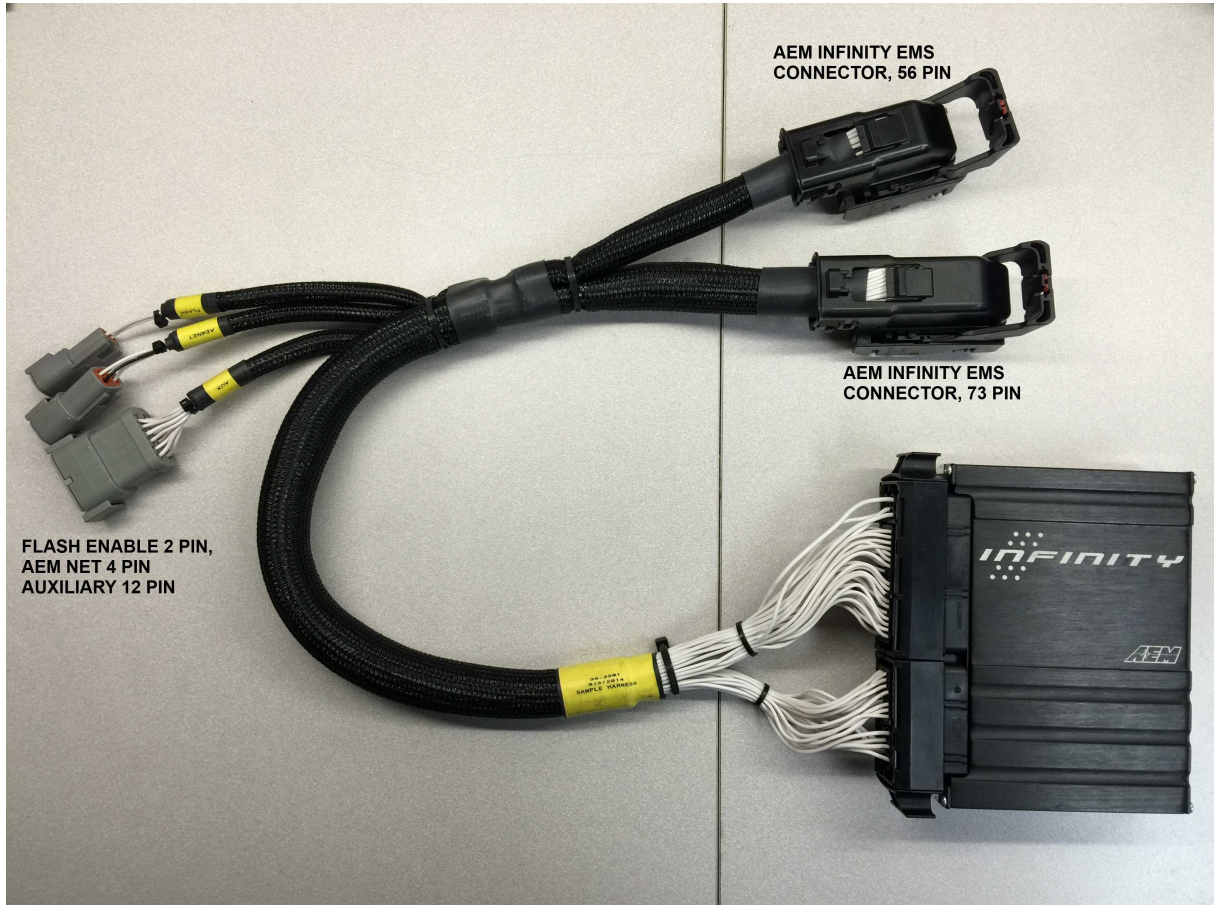
The AEM Infinity EMS uses the MX123 Sealed Connection System from Molex. AEM strongly recommends that users become familiar with the proper tools and procedures for working with these high density connectors before attempting any modifications. The entire Molex MX123 User Manual can be downloaded direct from Molex at:

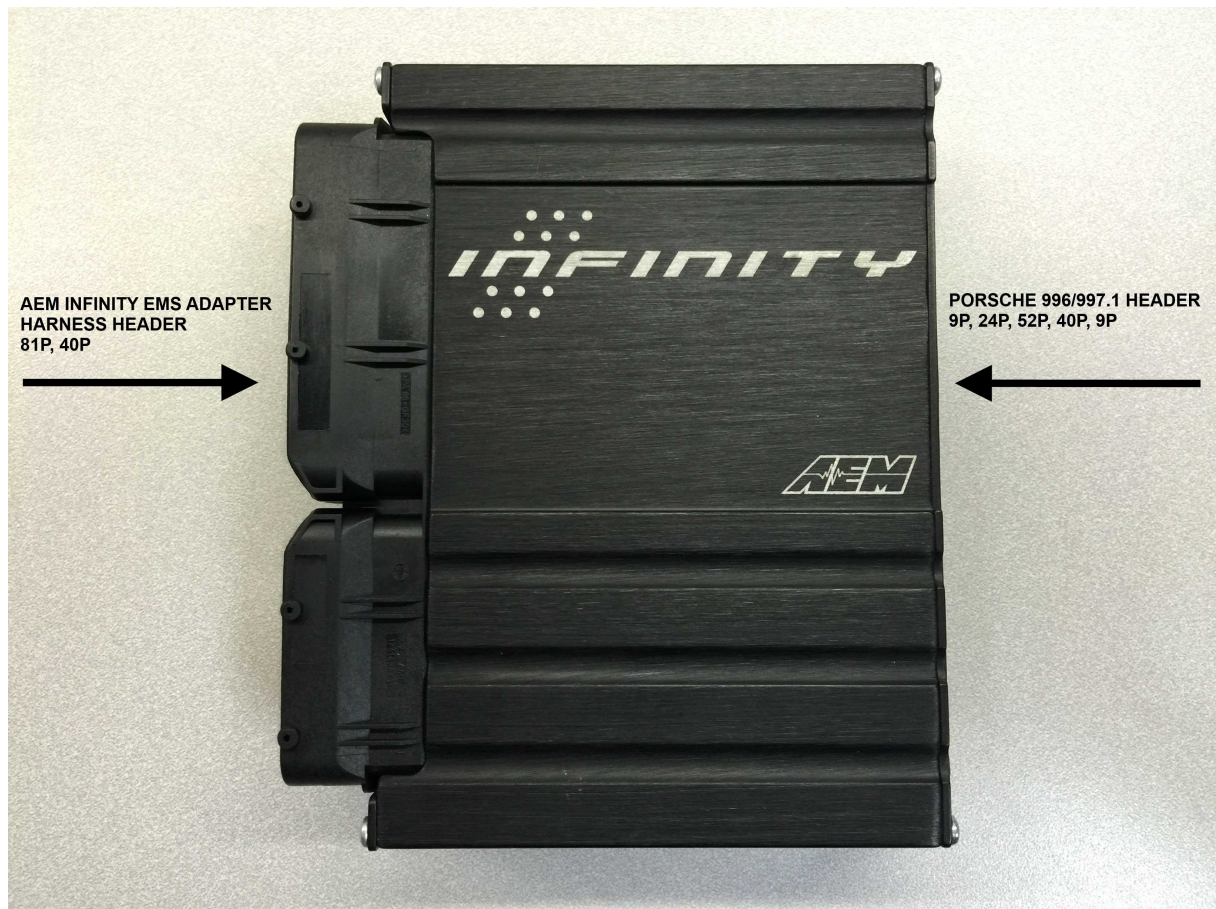
http://www.molex.com/mx_upload/family//MX123UserManual.pdf



INFINITY ADAPTER HARNESS

Included with the 996 Turbo kit is a harness and adapter interface. These are used to make the connection between the AEM Infinity EMS and the Porsche wiring harness plug and play. This is depicted below with the 73-pin and 56-pin connectors and the Porsche 996 Turbo header. There are also a few other integrated connectors within this harness described below.





The gray Deutsch 2P DTM “Flash Enable” connector is used for secondary hardware flashing. The included shunt connector jumps the 2 wires together. Once initially flashed, the EMS is normally upgraded in the software, not using this connector.

The gray Deutsch 4P DTM connector is used for “AEMNet”. AEMNet is an open architecture based on CAN 2.0 which provides the ability for multiple enabled devices, such as dashboards, data loggers, etc., to easily communicate with one another through two twisted cables (CAN+/CAN-).

The gray Deutsch 12P DTM “Auxiliary” connector is used to adapt many common ancillary inputs and outputs easily. Included in the kit are a DTM 12P mating connector, 12 DTM terminals, and a DTM 12P wedgelock. If used, these components will need to be terminated by the installer or end user with 16-22awg wire (not included). Note: the pin numbering is molded into the connector.

Below is a description of each of the available input/output found in the Porsche 996 Turbo specific "Auxiliary" connector.

Deutsch Pin	Destination Pin	Pin Description	Default Pin Function	Notes
1	A1-31	Sensor Ground	Isolated sensor ground	This is not the same as a power ground or chassis ground.
2	A1-29	+5V Ref	5 volt sensor reference supply	When measured with a voltmeter, it is normal to not measure exactly 5V.
3	A1-3	+12V From Relay	12 volt power supply from relay	This 12V is coming through the vehicle's main relay and should only be used for low current electronics.
4	C1-37	Analog 9	Fuel Pressure	This wire goes directly to the signal wire of the pressure sensor.
5	C1-36	Analog 8	MAP	This should be wired directly to the MAP sensor's signal pin. Note: The OEM Porsche boost pressure sensor connection must be removed if adding an external MAP sensor.
6	C1-40	Analog 12	Mode Switch	This analog input can be used for other functions such as launch boost target, 2 step, and start enable.
7	C1-26	Digital 5	Flex Fuel	This frequency/duty input can be used as flex content sensor, turbo speed sensor, MAF sensor, or a wheel speed/vehicle speed sensor.
8	C1-44	Highside 0	Not Assigned	For a relay, this should be wired to terminal 86 (or 85). Supply chassis ground to the opposite terminal 85 (or 86). If directly driving a low current component, wire this to the 12V terminal. 4 amps max current.
9	C2-15	Analog Temp 4	Charge Out Temp	This analog input can be used for temperature sensors only.
10	C2-43	Lowside 8	Not Assigned	This lowside output can be used to activate the lowside of a relay or PWM a +12V solenoid.
11	C1-25	Digital 4	Not Assigned	This frequency/duty input can be used as flex content sensor, turbo speed sensor, MAF sensor, or a wheel speed/vehicle speed sensor.

12	C2-37	Digital 6	Not Assigned	This switch input can be used as a clutch switch, brake switch, staged switch, nitrous switch, A/C request switch or as a start enable option.
----	-------	-----------	--------------	--

AIRFLOW METERING

The Porsche 996 Turbo is equipped with one MAF (Mass Air Flow) sensor and a pre-throttle body charge pressure sensor. The Infinity supports the factory mass airflow sensor and boost pressure sensor. Users can also add a MAP (Manifold Absolute Pressure) sensor and use the speed density airflow algorithm instead.

Note: If adding an external MAP sensor, users must disconnect the electrical connection from the OEM Porsche boost pressure sensor to the Infinity.

Mass Airflow Setup

Setup Wizard

To enable MAF on the Infinity, use the setup wizard's "Engine" tab to select "0-5V MAF" or "Frequency MAF" as the airflow calculation method. Users can choose a number of options for the main spark map load axis. The example below shows "MassAirflow [gms/rev]" as the main spark load axis. The 996 Turbo base calibration will have this pre-configured for use on a stock 996 Turbo.

Basic Setup — ^

Engine

Tuning Preferences

Cam/Crank

Mass Airflow

Injector Setup

Basic Sensors

DBW Tuning

Set Throttle Range

Ignition Sync

— Advanced Setup — v

— Outputs — v

Engine

Engine displacement, number of cylinders, and firing order will be used for basic setup of airflow calculations, ignition and injector mapping, and knock sensor assignment.

Note that selecting Analog MAF (0-5V) or Frequency MAF (digital) for Airflow Calculation Method disables VE Table Load Axis Selection. Likewise, selecting VE for Airflow Calculation Method disables modifications to the Mass Airflow Wizard.

Engine Displacement (L) 3.60

Number of Cylinders 6

Engine Cycle Type 4 Stroke

Ignition Type Sequential (Coil On Plug)

Firing Order 1-6-2-4-3-5

Airflow Calculation Method 0-5V MAF

Main Spark Map Load Axis Selection MassAirflow [gms/rev]

Enable the MAF sensor and choose input options in the setup wizard's "Mass Airflow" tab. The MAF failsafe option can also be enabled here. The 996 Turbo base calibration will have this pre-configured for use on a stock 996 Turbo.

Basic Setup — ▲

Engine
Tuning Preferences
Cam/Crank
Mass Airflow
Injector Setup
Basic Sensors
DBW Tuning
Set Throttle Range
Ignition Sync
— **Advanced Setup** — ▼
— **Outputs** — ▼

Mass Airflow

There are two 1D tables in the calibration. They are named:

- MAF1_Cal [gms/s]
- MAF2_Cal [gms/s]

These two tables add together so the user can use one or two MAF sensors.

There is a throttle rate based filter 1D table in the calibration. It is named:

- MAF_filter

Similar to the 2D 'CrankVE_Table [%]' for speed density, the MAF algorithm uses a 2D lookup table during cranking. It is called:

- CrankMAF_Table [gms/rev]

MAF Sensor 1 Enable:

MAF Sensor 1 Input: Analog20 [V]

MAF Sensor 2 Enable:

MAF Sensor 2 Input: Disabled

In the event of a sensor/wiring fault (MAF sensor input less than 0.05V or greater than 4.95V), the 'ErrorMAF' channel will toggle from 0 to 1. If MAF Failsafe Enable is active, the system will use the '2D MAF_Failsafe [gms/rev] lookup to calculate airflow instead of using the MAF sensors.

MAF Failsafe Enable:

MAF Failsafe y-axis: Throttle [%]

Note: Users have the option of using either MAP [kPa] or Mass Airflow [gms/rev] (and in some cases, Throttle [%]) for options requiring an engine load. This includes ignition timing tables, lowside tables, lean protect tables, wall wetting tables, fuel trim tables, ignition trim tables, injector timing tables, staged fuel tables, VVC target tables, lambda target tables, nitrous activation, lambda feedback enable activation, decel fuel cut activation, etc. It is up to the user to determine which load reference to use in all cases.

Starting

Because there is little mass flow initially during cranking, the Infinity uses a look-up table during engine cranking (<400 RPM) to determine fuel requirements. This 2D Table is called "CrankMAF_Table [gms/rev]" and the Infinity will calculate mass airflow (grams/second) based on this grams/rev input. As shown in the example below, a "clear flood" function can be built into this table (>90% throttle shown).

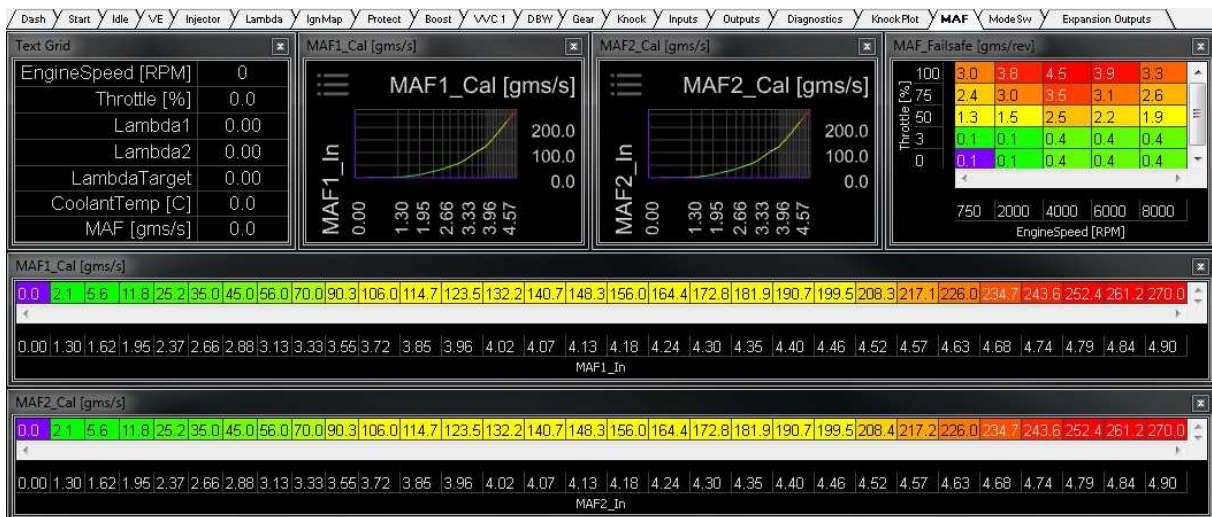
Throttle [%]	50	100	200	300	400
90.0	0.00	0.00	0.00	0.00	0.00
89.9	0.20	0.20	0.20	0.20	0.20
50.0	0.18	0.18	0.18	0.18	0.18
25.0	0.16	0.16	0.16	0.16	0.16
0.0	0.14	0.14	0.14	0.14	0.14

As the transition from engine cranking to engine running occurs (at 400 RPM), the Infinity switches from the "CrankMAF" look-up fueling method mentioned above to the MAF sensors. The smoothness of this transition can be maximized by using the 2D table "FuelTrim_Coolant" to add some initial fuel for a fraction of a second after the transition occurs, as shown below.

CoolantTemp [C]	0.1	0.3	3.0	8.0	15.0
120	0.60	0.00	0.00	0.00	0.00
100	0.60	0.00	0.00	0.00	0.00
80	0.60	0.00	0.00	0.00	0.00
60	0.88	0.00	0.00	0.00	0.00
40	0.88	0.10	0.05	0.00	0.00
20	0.88	0.20	0.10	0.05	0.00
0	0.88	0.30	0.15	0.05	0.05
-20	0.88	0.40	0.15	0.05	0.05

Fuel Tuning

Fuel tuning with MAF sensors uses the two 30-cell 2D tables below called "MAF1_Cal [gms/s]" and "MAF2_Cal [gms/s]". When two MAF sensors are enabled, these tables are added together to determine fuel requirements. The 996 Turbo only has one MAF sensor so only "MAF1_Cal [gms/s]" is used. The VE table is not used when MAF is enabled. The factory UEGO sensors are supported and the AEM adapter harness is wired to use them.



Tuning Ignition Timing

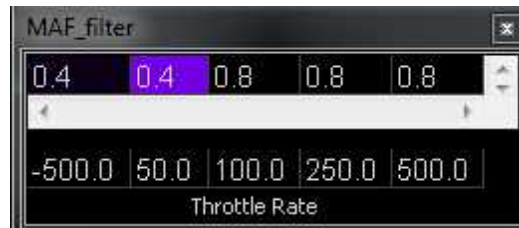
Unless users are using an external (non factory) MAP sensor plumbed into the intake manifold, it is recommended that users do not use "MAP [kPa]" as an engine load input into the Ignition table. This is because the OEM Porsche boost pressure sensor is located before the throttle blade and will not register manifold vacuum. The AEM 996 Turbo base calibration is configured to use the OEM boost pressure sensor and the main ignition map load axis is "MassAirflow [gms/rev]" as shown below.

MassAirflow [gms/rev]	2.0	2.8	3.5	4.3	5.0	6.5	7.3	8.0	8.0	6.8	5.8	5.3	5.8	6.3	6.8	7.0	7.8	8.3	9.3	10.0
6.00	2.0	2.8	3.5	4.3	5.0	6.5	7.3	8.0	8.0	6.8	5.8	5.3	5.8	6.3	6.8	7.0	7.8	8.3	9.3	10.0
5.50	2.5	3.3	3.8	4.5	6.0	7.5	8.8	9.5	9.3	7.8	6.5	5.8	6.3	7.0	7.3	7.8	8.3	9.0	9.8	10.5
5.00	2.8	3.5	4.8	6.0	7.5	9.3	10.8	11.5	11.0	9.3	7.5	6.8	7.3	8.0	8.5	9.0	9.3	10.0	10.8	11.5
4.50	3.3	4.0	6.0	7.3	9.3	11.5	13.3	14.0	13.0	10.8	8.8	7.8	8.3	9.0	10.0	10.5	10.8	11.3	12.0	12.8
4.00	3.8	4.5	7.0	8.8	11.3	13.8	15.5	16.3	15.0	12.5	10.0	9.0	9.3	10.0	11.3	11.8	12.0	12.8	13.5	14.0
3.50	4.3	5.0	7.8	10.0	13.0	15.8	17.8	18.0	16.8	14.0	11.5	10.3	10.5	11.3	12.5	13.3	13.5	14.3	14.8	15.3
3.25	4.5	5.8	8.8	11.5	14.5	17.5	19.3	19.3	18.3	15.5	13.0	11.5	11.8	12.5	13.8	14.5	15.0	15.5	16.0	16.5
3.00	5.0	6.5	10.0	12.8	16.0	19.0	20.8	20.5	19.5	16.8	14.5	13.0	13.0	13.8	15.0	16.0	16.3	17.0	17.5	17.8
2.75	5.5	6.8	9.8	14.0	17.5	19.8	21.8	21.5	20.8	18.3	16.0	14.5	14.5	15.0	16.3	17.3	17.8	18.3	18.8	19.0
2.50	5.8	7.3	10.3	15.0	18.8	20.8	22.5	22.8	22.0	19.8	17.5	15.8	15.8	16.5	17.8	18.5	19.0	19.5	19.8	20.0
2.25	6.3	7.8	11.3	15.8	19.8	21.5	23.5	23.8	23.3	21.3	18.8	17.3	17.3	17.8	19.0	19.8	20.3	20.5	21.0	21.3
2.00	6.8	8.3	12.0	16.5	20.8	22.3	24.5	25.0	24.3	22.5	20.3	18.8	18.8	19.3	20.3	20.8	21.3	21.5	22.0	22.3
1.75	7.3	8.5	12.3	16.8	21.3	23.0	25.5	26.0	25.5	24.0	21.5	20.3	20.3	20.8	21.5	22.0	22.3	22.5	22.8	23.0
1.50	7.5	8.8	12.3	16.5	21.0	24.0	26.3	27.3	26.8	25.5	23.5	22.3	22.0	22.5	23.0	23.5	23.8	24.0	24.3	24.5
1.25	8.0	8.8	11.5	15.8	20.5	24.8	27.3	28.3	28.0	27.0	25.8	24.8	24.5	24.8	25.3	25.8	26.0	26.0	26.3	26.5
1.00	8.0	8.5	11.0	15.0	20.5	26.0	29.3	30.5	30.3	29.3	28.3	27.3	27.0	27.3	27.5	27.8	27.8	28.0	28.0	28.3
0.75	8.0	8.3	10.5	14.8	21.3	28.0	31.3	32.3	32.3	31.5	31.0	30.3	30.0	30.0	30.3	30.3	30.3	30.5	30.5	30.5
0.50	8.0	8.0	9.8	14.0	21.8	32.3	34.0	34.0	34.0	34.0	34.0	34.0	34.0	34.0	34.0	34.0	34.0	34.0	34.0	34.0
0.25	8.0	8.0	10.0	14.3	23.0	35.5	38.0	38.0	38.0	38.0	38.0	38.0	38.0	38.0	38.0	38.0	38.0	38.0	38.0	38.0
0.00	8.0	8.0	10.0	14.3	24.0	37.5	40.0	40.0	40.0	40.0	40.0	40.0	40.0	40.0	40.0	40.0	40.0	40.0	40.0	40.0

500 750 1000 1250 1500 2000 2500 3000 3500 4000 4500 5000 5500 6000 6500 7000 7500 8000 8500 9000
EngineSpeed [RPM]

MAF Filter

Tuning the MAF filter properly plays an important role for large transient throttle changes. If throttle angle is quickly increased to wide open from a low throttle angle, high manifold vacuum condition, air mass fills the intake manifold (nearly equalizing pressure to atmospheric) at a quicker rate than is consumed by the engine (this is more prominent at lower RPM). Without filtering, this would result in poor (over) fueling. The example below shows higher filtering during quick throttle open events to combat over fueling and a lower filter for throttle closing events to allow for maximum decel fuel cut response.



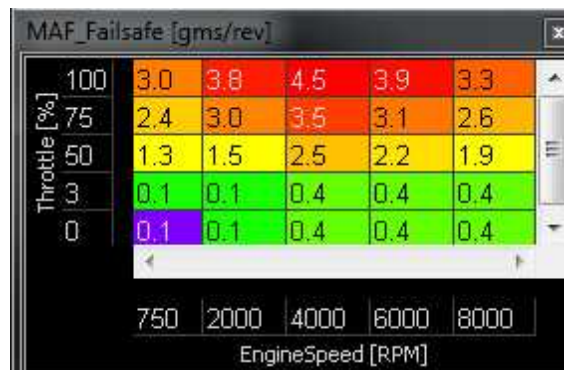
MAF Failsafe

In the event of a sensor/wiring fault (MAF sensor input less than 0.05V or greater than 4.95V), the "ErrorMAF" channel will toggle from 0 to 1. If the MAF Failsafe Enable is active (configurable in the wizard's "Mass Airflow" tab), the system will use the 2D "MAF_Failsafe [gms/rev]" look-up table to calculate airflow instead of using the MAF sensor. Users can choose between Throttle [%] and MAP [kPa] as a load axis. Users can enable the lean protect function in the setup wizard for further engine safety.

In the event of a sensor/wiring fault [MAF sensor input less than 0.05V or greater than 4.95V], the 'ErrorMAF' channel will toggle from 0 to 1. If MAF Failsafe Enable is active, the system will use the '2D MAF_Failsafe [gms/rev]' lookup to calculate airflow instead of using the MAF sensors.

MAF Failsafe Enable

MAF Failsafe y-axis: Throttle [%]



DRIVE-BY-WIRE THROTTLE CONTROL

The Porsche 996 Turbo uses a single throttle body controlled via drive-by-wire (DBW). It is important to note that throttle control is a critical system which needs to be correct. The basic terms of drive-by-wire are as follows: the 'gas pedal' inside the passenger cabin is called the Accelerator Pedal (DBW_APP1%), while the electronically controlled throttle in the engine bay is referenced as 'Throttle' (Throttle%, DBW1_TPSA%). Based on the measured Accelerator Pedal position, the ECU determines a desired DBW_Target position and moves the Throttle to that position.



As shown, there is a Drive By Wire Wizard which must be used to calibrate accelerator pedal and throttle position sensors. Although sensor calibration values from one vehicle may be close enough to work for another vehicle under some circumstances, it is absolutely necessary to run the Drive By Wire Wizard before running the engine for the first time. The wizard should be repeated if any components in the throttle control system are removed or replaced such as the throttle bodies, TPS sensors, electronic throttle control motor, or accelerator pedal.

Please ensure the vehicle's battery is fully charged (at least 12.6 Volts) before running the Drive By Wire Wizard, as low battery voltage can result in abnormal sensor measurements. If a battery charger is available, it is preferable to connect the battery charger in 5A, 10A, or 20A mode and perform the Drive By Wire Wizard while the battery voltage is near 13.5-14.0 Volts. When connected to the Infinity EMS with the engine OFF, go to Wizards | Drive By Wire Wizard. Follow the step-by-step instructions for each page.

Basic Setup

- Engine
- Tuning Preferences
- Cam/Crank
- Mass Airflow
- Injector Setup
- Basic Sensors
- DBW Tuning**
- Set Throttle Range
- Ignition Sync
- Advanced Setup
- Outputs

DBW Tuning

Drive by Wire Setup...

Drive-by-Wire 1 User Enable

Drive-by-Wire 2 User Enable

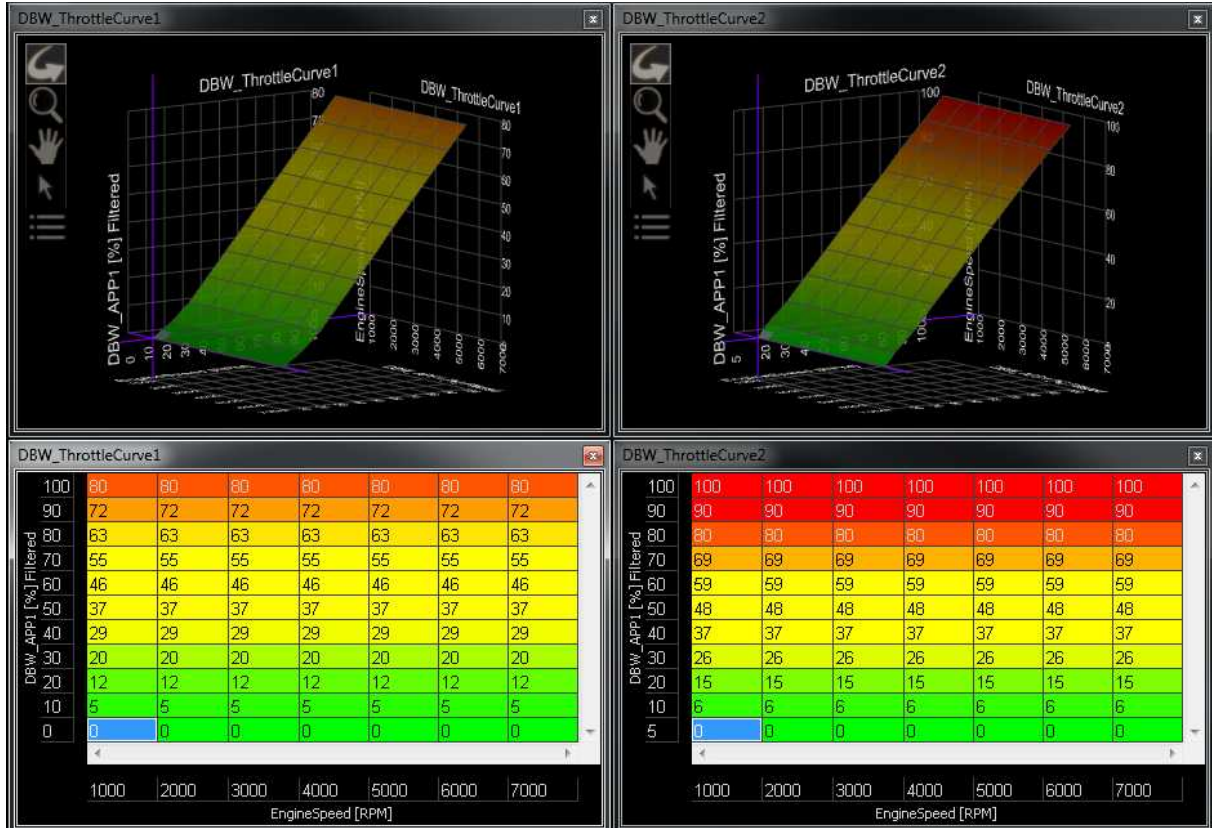
DBW Idle Control

DBW Idle Control Range

The calculated 'Idle Position' value will be rescaled such that 100% for Idle Position will increase the calculated DBW_Target by this amount. Typical value = 5 which represents 5% maximum throttle increase due to idle control calculations (0% to +5%). The larger the throttle body compared to your engine size the smaller this number will be.

Show Advanced Setup

The 1D ModeSelect_DBW table is used to switch between the two different DBW_ThrottleCurve tables, depending on the status of the MODESWITCH function. Both 2D tables use accelerator pedal position for the y-axis and RPM for the x-axis. The values that are entered in the table are throttle position targets (example shown below).



Note: There is also a DBW Tuning section in the Wizards | Setup Wizard | DBW Tuning... These settings can be used to fine tune DBW response.

Basic Setup

- Engine
- Tuning Preferences
- Cam/Crank
- Mass Airflow
- Injector Setup
- Basic Sensors
- DBW Tuning**
- Set Throttle Range
- Ignition Sync

Advanced Setup

Outputs

Hide Advanced Setup

DBW Frequency Hz

DBW PID Settings

DBW Proportional Gain

DBW Integral Gain

DBW Derivative Gain

PID Integral Clamps

DBW Integral Clamp High Typical value is between 10 to 20

DBW Integral Clamp Low Typical value is between -10 to -20

Sensor Smoothing

DBW Accel Pedal Smoothing %

DBW Throttle Smoothing %

Mode Select

The ModeSelect_DBW table is used to choose when to use the DBW_ThrottleCurve1 table or the DBW_ThrottleCurve2 table for calculating desired throttle position.

ModeSelect_DBW x-axis input

DBW_Close duty cycle limit %

Error Response

Fuel and spark will be cut if EngineSpeed exceeds this value while after the DBW throttle has been disabled due to errors

DBW Error Rev Limit rpm

To prevent unsafe conditions, the DBW throttle outputs will be disabled if the actual throttle position differs from the target throttle position for approximately 1 second while the engine is running. To simplify the PID tuning process, DBW Tracking Errors can be disabled at 0 RPM. Turning this option 'OFF' will allow different PID values to be evaluated when the engine is off, without the DBW system shutting down due to poor throttle tracking. Note that most DBW throttles are sensitive to system voltage below 13.5V, so it is recommended to perform this testing with a battery charger connected.

DBW Tracking Errors at 0 RPM

There are a few integrated DBW fail safes incorporated into the Infinity system. The ECU constantly monitors the accelerator pedal sensor voltage and throttle position sensor voltages to ensure the signals are not excessively high or low due to damaged sensors, short circuits, or broken wires. The ECU also performs self-diagnostics to ensure the electronic throttle is following desired DBW_Target properly, that the DBW throttle control motor is not using excessive energy to move the throttle, and watching to see that all the redundant sensors are working together as expected. If any of these conditions are determined to be abnormal or unsafe, the ECU can shut the engine down to prevent unintended engine acceleration. This error will reset when the ignition key is cycled.

CRUISE CONTROL

Currently, a cruise control feature is not supported with the AEM Infinity. However, the multi-functional steering wheel buttons are transmitted over the Porsche CAN bus and are available for miscellaneous purposes described below. There are 4 buttons: Enable, Cancel, Set, Accelerate+, and Decelerate- (as shown).



Note: Cruise enable (channel "CC_Enable") must be active (indicated by an illuminated green cruise light on the dash) for the below features to be functional. To activate "CC_Enable", simply turn cruise control on (press the outer button on the cruise multifunction switch in once).

Cancel

Users can configure the Cancel button to either the 3-step rev limiter or be an AEM traction control switch. It is not recommended to use the Cancel button for both of these functions simultaneously. This switch channel is called "CC_Cancel".

A 3-step rev limiter is a simplified traction control based system that uses engine and vehicle speed or launch timer inputs to limit the RPM of the engine. If using the Cancel button as a 3-step rev limiter switch, first be sure the 3StepSwitch table is set to recognize the "momentary" Cancel button, as shown in figure 1. Set the 3StepTargetFuel and/or the 3StepTargetSpark table's first (0 MPH) cell to the desired launch RPM. When the Cancel button is held down, the EMS will limit the engine's corresponding RPM. Once the car is launched and the EMS begins to register vehicle speed, the RPM limit can then be tailored to prevent wheel spin using these tables.

If using the Cancel button as a traction control switch, the latching Cancel button changes the TC_SlipTargetTrim 1-axis lookup table, as shown in figure 2. Simultaneously, the low fuel light on the dash will blink to inform the driver the status of the programmable AEM traction control. Normally this table is used with a multiple position switch. However, because the Cancel button is either OFF (0) or ON (1), only the first two cells of the table are used. Two possible traction scenarios, for example, could be ON/OFF or aggressive/nonaggressive. To use this feature, it must be enabled in Infinity Tuner: Wizard | Setup wizard | Traction Control | Traction Control Enable.

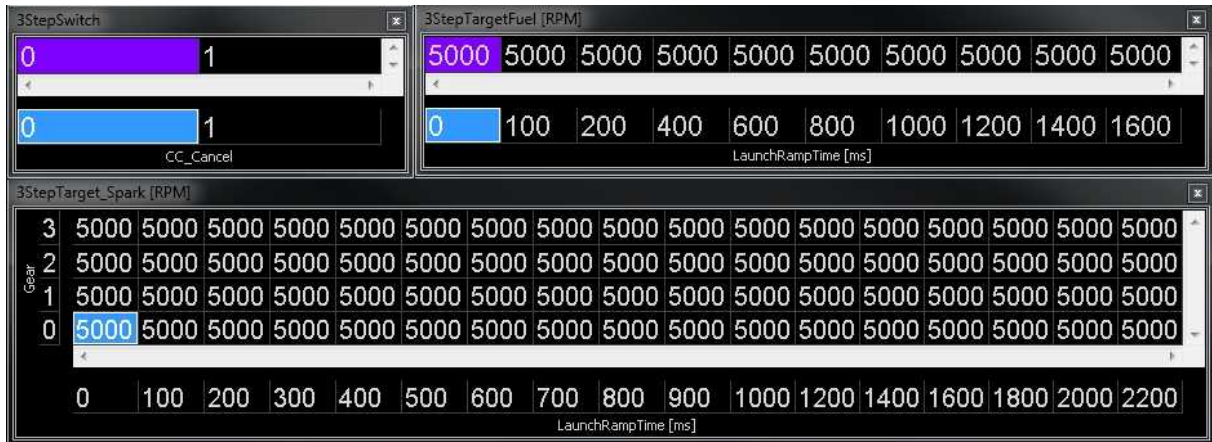


Figure 1: 3-Step Setup

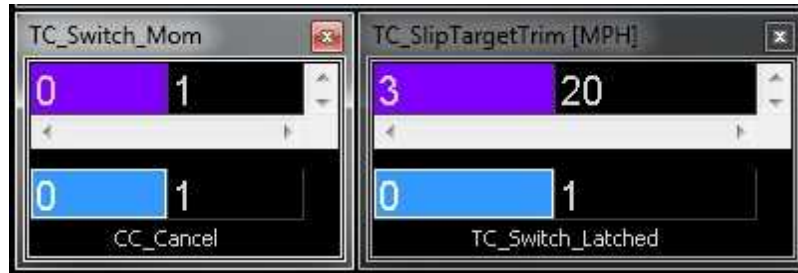


Figure 2: Traction Control Setup

Accel/Decel Buttons

The steering wheel's Accelerate+ and Decelerate- (pull towards, push down) momentary buttons increment and decrement the map switching function "CC_ModeSwitch". This feature is extremely flexible as it can be used to switch VE tables, ignition maps, lambda targets, and boost levels.

ModeSwitch												
0.0	1.0	2.0	3.0	4.0	5.0	6.0	7.0	8.0	9.0	10.0	11.0	
0.0	1.0	2.0	3.0	4.0	5.0	6.0	7.0	8.0	8.0	8.0	8.0	
CC_ModeSwitch												
ModeSelect_IgnBlend												
2.0	2.0	2.0	2.0	2.0	2.0	2.0	2.0	2.0	2.0	2.0	2.0	2.0
1.0	2.0	3.0	4.0	5.0	6.0	7.0	8.0	9.0	10.0	11.0	12.0	
ModeSwitch												
ModeSelect_Ign												
0.0	0.0	0.0	0.0	0.0	0.0	0.0	0.0	0.0	0.0	0.0	0.0	0.0
1.0	2.0	3.0	4.0	5.0	6.0	7.0	8.0	9.0	10.0	11.0	12.0	
ModeSwitch												
ModeSelect_LambdaBlend												
2.0	2.0	2.0	2.0	2.0	2.0	2.0	2.0	2.0	2.0	2.0	2.0	2.0
1.0	2.0	3.0	4.0	5.0	6.0	7.0	8.0	9.0	10.0	11.0	12.0	
ModeSwitch												
ModeSelect_Lambda												
0.0	0.0	0.0	0.0	0.0	0.0	0.0	0.0	0.0	0.0	0.0	0.0	0.0
1.0	2.0	3.0	4.0	5.0	6.0	7.0	8.0	9.0	10.0	11.0	12.0	
ModeSwitch												

Notes:

When the Accelerate+ or Decelerate- button is depressed (or when KeyOn occurs) the tachometer displays 1K, 2K, 3K, 4K, 5K, 6K, 7K, or 8K momentarily representing the currently selected value of ModeSwitch. Because of the Porsche 996 Turbo's tachometer range, 1–8 are the only valid values (9–12 are not used for this application but can be used if using an external 12 position switch).

In order for the current ModeSwitch mode to be recalled between key off/key on cycles, the "Key Off Commit" function must be enabled in the tuning preferences section of the wizard.

For safety precautions, the AEM base session files come standard with the VE tables, ignition maps, lambda targets, and boost tables all set the same because the Accelerate+ or Decelerate- button could be mistakenly bumped.

With the AEM Infinity, traction control can be controlled using any combination of DBW, fuel cut, ignition cut, or ignition retard.

In order to use this feature, care must be taken into account when setting up the tables and tuning. Enter the number of the table into the corresponding mode selection table for each feature.

CAN BUS

The AEM Infinity EMS for the Porsche 996 Turbo supports the majority of the CAN features including: Tachometer, Oil Temperature, Oil Pressure, Coolant Temperature, A/C Request/Control, Steering Angle, Boost Pressure, Wheel Speed Sensors, Reduced Engine Power Warning, MIL Warning, Cruise Light, and Fuel Consumption (MPG)



Rather than OBD2 diagnostics, the "Check Engine" light is now dedicated to the AEM "MILOutput" feature. The AEM MILOutput activates if any one of the following inputs are in an error state: air temp, baro pressure, coolant temp, exhaust back pressure, fuel pressure, UEGO #1, UEGO #2, MAF analog, MAF digital, MAP, oil pressure, or throttle position. If any of these sensors are not used, they should be turned OFF in the Wizard to avoid any false readings. To activate the MILOutput feature, go to the Wizard and check "Enable MIL Output" in Advanced Setup > Engine Protection.

The following channels on the Porsche CAN bus are available for logging. The AEM traction control utilizes the CAN wheel speed sensors: CAN_FLWS [MPH], CAN_FRWS [MPH], CAN_RLWS [MPH], CAN_RRWS [MPH]. The following steering channels are only for data logging: CAN_SteeringAngle

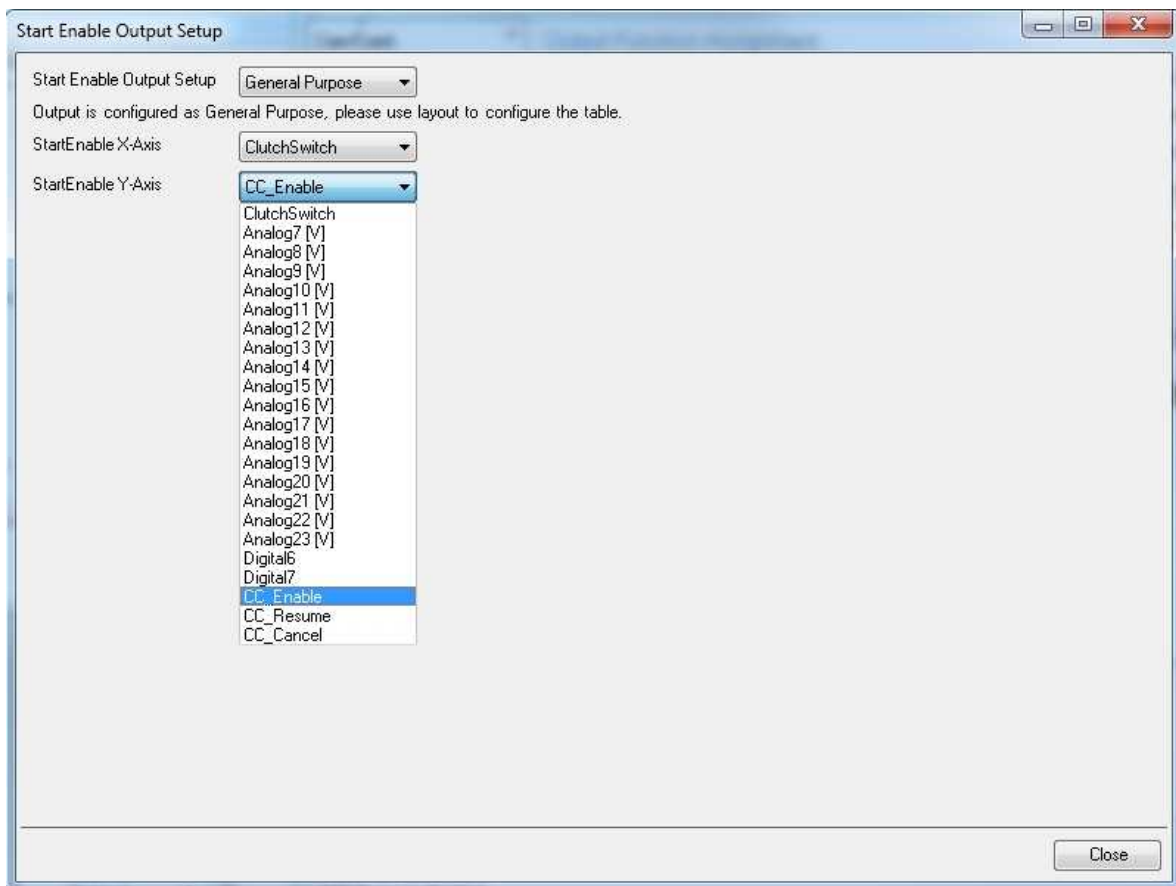
The fuel level sender on the Porsche 996 Turbo only actually measures the first 1/2 to 2/3 of a tank due to the saddle tank design to clear the front drive-train. The stock DME relays a fuel consumption rate via CAN to the factory dash. From here, the dash calculates fuel level and fuel mileage. The AEM Infinity does broadcast this message on the CAN bus. The fuel consumption rate is calculated based on injector duty cycle, injector size, engine speed, etc. Because there are many user configurable variables, if the fuel mileage not accurate, users can trim the flow rate being transmitted by using the trim channel "CAN_FuelFlowScaler". A value of 0.000005 should be close on a stock car. To increase calculated fuel consumption rate, make this trim larger. To decrease calculated fuel consumption rate, make this trim smaller.

STARTING

The Porsche 996 Turbo uses the clutch switch to enable starting on the factory Porsche DME. The Infinity allows this functionality to be user configurable. By using the 2D table "StartEnable", users can configure a number of analog, digital, or CAN inputs to enable starting. The supplied base calibration is configured to allow factory like starting with the clutch switch OR by pressing the cruise control enable button (effectively bypassing the clutch switch). For added security, users can add a hidden switch to enable starting. Taking things a step further, users can fully disable the 2D Start Enable table and password protect it, preventing starting until the table is password unlocked and enabled again.

The screenshot shows a software window titled "Output Function Assignment". On the left is a vertical menu with various categories: "Cam/Crank", "Mass Airflow", "Injector Setup", "Basic Sensors", "DBW Tuning", "Set Throttle Range", "Ignition Sync", "Advanced Setup", "Accel and Decel Fuel", "Boost Control", "Engine Protection", "Fuel Trims", "Idle", "Input Function Assign...", "Knock Setup", "Lambda Control", "Launch Antilag", "Launch Timer", "Nitrous N2O", "Main Rev Limiter", "Rev Limit 2 Step", "Rev Limit 3 Step", "Shift Cut", "Traction Control", "USB Logging", "VVC", "Diagnostics", "Outputs", and "Output Function Assign...". The "Advanced Setup" section is expanded. The main area contains explanatory text: "All of the standard assigned functions are preconfigured and do not need to be adjusted if the vehicle's wiring matches the AEM pinout chart. Most of the ECU's Low-Side (switched ground) outputs can be reconfigured by reassigning the x- and y-inputs of LS_Duty tables. Most of the ECU's High-Side (switched +12V) outputs can be reconfigured by reassigning the x- and y-inputs of 'HS_Table' tables. Porsche Expansion Low-Side (switched ground) outputs can be reconfigured by reassigning the x- and y-inputs of CAN_LS tables. These outputs are not PWM-able and can only be used as an on/off function. Porsche Expansion Relay Drivers (switched ground) outputs can be reconfigured by reassigning the x- and y-inputs of CAN_RelayCtrl tables. These outputs are not PWM-able and can only be used as an on/off function in low current relay control circuits." Below this text is a table with four tabs: "Low Side", "High Side", "Porsche Expansion Low Side", "Porsche Expansion Relay Drivers", and "Porsche Start Enable". The "Porsche Start Enable" tab is active. The table has columns for "Function", "Channel", "Pin", and "Status". One row is filled with "Start Enable Output Setup" and "General Purpose". A "Pin Out..." button is located at the bottom left of the table area.

Function	Channel	Pin	Status
Start Enable Output Setup	General Purpose		



	ClutchSwitch	StartEnable
CC_Enable	1.0	1
StartEnable	0.0	1

Shown Above: Start Enable input setup in the setup wizard "Output Function Assignments" tab and the 2D "StartEnable" table.

VARIOCAM

The AEM Infinity fully supports the Porsche 996 Turbo Variocam system. This includes both a user configurable low/high cam profile and 30 degrees of advance on both intake camshafts. The factory Porsche DME controls the intake cam timing in an on/off manner (0 degrees of advance or 30 degrees of advance) by providing a 0% or 100% duty cycle lowside switch to ground to the variocam solenoids.. The AEM Infinity is capable of controlling cam timing in an infinitely variable manner, however the base calibration is set to control them in an on/off manner like a stock DME. To allow for infinitely variable cam control, users must change the "VVC1_BaseDuty [%]" tables, add PID gains, and add VVC1 feedback min/max values.

Variocam VVC can be configured in the setup wizard's "VVC" tab and tuned using the "VVC1" Infinity Tuner layout tab (shown below).

AEM Infinity-10

Basic Setup

- Engine
- Tuning Preferences
- Cam/Crank
- Mass Airflow
- Injector Setup
- Basic Sensors
- DBW Tuning
- Set Throttle Range
- Ignition Sync
- Advanced Setup
- Accel and Decel Fuel
- Boost Control
- Engine Protection
- Fuel Trims
- Idle
- Input Function Assignments
- Knock Setup
- Lambda Control
- Launch Antilag
- Launch Timer
- Nitrous N2O
- Main Rev Limiter
- Rev Limit 2 Step
- Rev Limit 3 Step
- Shift Cut
- Traction Control
- USB Logging
- VVC
- Diagnostics
- Outputs

WC

This wizard is used to configure Variable Valve Control (supports up to 4-cam VVC).

WC Cam Sync

Cam sync is similar to ignition sync on an engine. With all VVC channels disabled, start and idle the engine. The intake cam should be at full retard and the exhaust cam should be at full advance. These points will serve as the VVC cam zero reference. View the channels 'Cam0_Timing [deg]', 'Cam1_Timing [deg]', 'Cam2_Timing [deg]', 'Cam3_Timing [deg]' and enter the value of these channels here. View the cam timing channels again, they should all read zero or close to zero. If they do not read zero, add what they currently read to the current value below and check again.

Failure to set cam sync properly may result in improper VVC function and possible engine damage!

Cam 0 Sync [deg] 15

Cam 1 Sync [deg] 630

WC Enable

WVC1A Enable Intake - Bank 1

WVC1B Enable Intake - Bank 2

WC Hardware Outputs

Use the Lowside Assignment Tables setup wizard to configure the Lowside outputs for the desired frequency [Hz] and duty [%]

WC Target Table

WVC Target Table Load Axis Selection Throttle [%]

WVC Minimum Coolant Temperature 60.0 °C

Show VVC1 Options

- Advanced Setup - ▲

- Accel and Decel Fuel
- Boost Control
- Engine Protection
- Fuel Trims
- Idle
- Input Function Assignments
- Knock Setup
- Lambda Control
- Launch Antilag
- Launch Timer
- Nitrous N2O
- Main Rev Limiter
- Rev Limit 2 Step
- Rev Limit 3 Step
- Shift Cut
- Traction Control
- USB Logging
- WVC
- Diagnostics

- Outputs - ▼

▼ Hide WVC1 Options

WVC1 Failsafe Features

Set the WVC1 failsafe limits to the WVC range of the application's intake camshaft movement plus a 5 degree buffer. WVC1A or WVC1B failsafe will enable when WVC1A or WVC1B cam timing goes out of the failsafe range. When the failsafe is enabled, the WVC cam that is in failsafe will disable WVC control and feedback, retarding the intake cam until the failsafe conditions are no longer met.

Ex. If the application has 60 degrees of possible intake advance, set the 'WVC1 Failsafe Min' to -5 and the 'WVC1 Failsafe Max' to 65.

WVC1 Failsafe Min

WVC1 Failsafe Max

WVC1 Feedback Min

WVC1 Feedback Max

WVC1 Duty Min

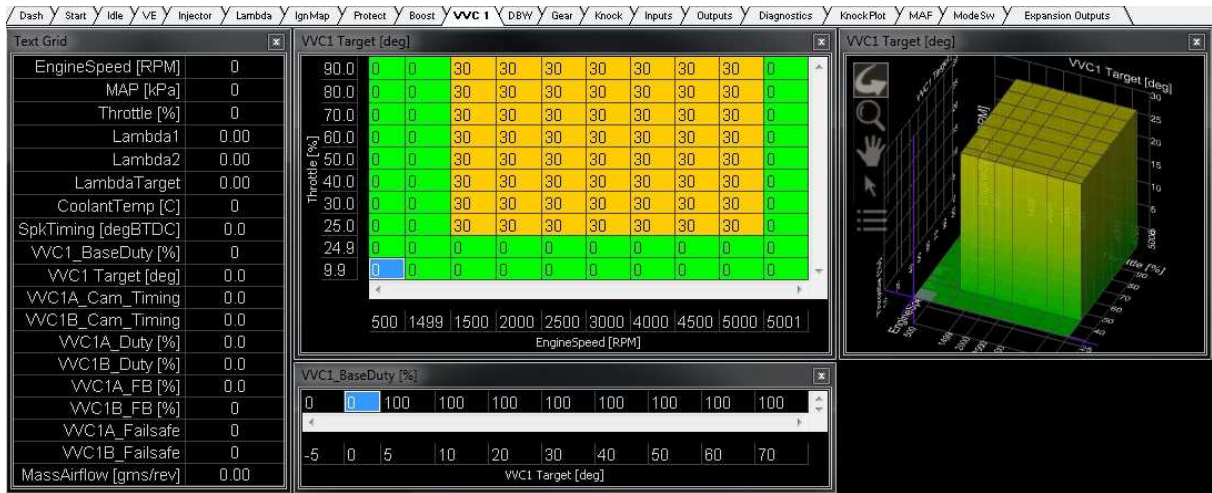
WVC1 Duty Max

WVC1 PID Settings

WVC1 Proportional Gain

WVC1 Integral Gain

WVC1 Derivative Gain



Variocam Plus Lo/Hi cam control can be configured in the "CAN Lowside 2 Output Setup" of the "Output Function Assignment" wizard tab. Select "VTEC_Active" as the main input. Because the Porsche 996 Turbo's small cam lobes are significantly smaller than the large cam lobes, the default settings activate the "hi" lobe at just 1200RPM and 14% throttle. Users can configure this to best suit their driving style.

— Basic Setup — ▲

- Engine
- Tuning Preferences
- Cam/Crank
- Mass Airflow
- Injector Setup
- Basic Sensors
- DBW Tuning
- Set Throttle Range
- Ignition Sync
- Advanced Setup — ▲
- Accel and Decel Fuel
- Boost Control
- Engine Protection
- Fuel Trims
- Idle
- Input Function Assignments
- Knock Setup
- Lambda Control
- Launch Antilag
- Launch Timer
- Nitrous N2O
- Main Rev Limiter
- Rev Limit 2 Step
- Rev Limit 3 Step
- Shift Cut
- Traction Control
- USB Logging
- VVC
- Diagnostics

Output Function Assignment

All of the standard assigned functions are preconfigured and do not need to be adjusted if the vehicle's wiring matches the AEM pinout chart.

Most of the ECU's Low-Side (switched ground) outputs can be reconfigured by reassigning the x- and y-inputs of LS_Duty tables.

Most of the ECU's High-Side (switched +12V) outputs can be reconfigured by reassigning the x- and y-inputs of 'HS_Table' tables.

Porsche Expansion Low-Side (switched ground) outputs can be reconfigured by reassigning the x- and y-inputs of CAN_LS tables. These outputs are not PWM-able and can only be used as an on/off function.

Porsche Expansion Relay Drivers (switched ground) outputs can be reconfigured by reassigning the x- and y-inputs of CAN_RelayCtrl tables. These outputs are not PWM-able and can only be used as an on/off function in low current relay control circuits.

Low Side

High Side

Porsche Expansion Low Side

Porsche Expansion Relay Drivers

Porsche Start Enable

Function	Channel	Pin	Status	
CAN Lowside 0 Output Setup	General Purpose	3-31		
CAN Lowside 1 Output Setup	CoolantFan20n	3-16	OFF	
CAN Lowside 2 Output Setup	VTEC_Active	3-1 & 3-...	OFF	

CAN Lowside 2 Output Setup

CAN Lowside 2 Output Setup VTEC_Active ▼

Condition At Least ▼ 1000.00 [] EngineSpeed (RPM) ▼

Use the following settings to configure VTEC:

VTEC Off Below RPM 1000 [] rpm

VTEC On Above RPM 1200 [] rpm

VTEC Off Below Throttle 12 [] %

VTEC On Above Throttle 14 [] %

Pin Out...

EXPANSION OUTPUTS

The AEM Adapter Interface includes three additional lowside outputs (ON/OFF 6A Max, not PWM-able) and three additional lowside relay drivers (500mA Max, not PWM-able). These outputs can be re-configured in the Output Function Assignments wizard tab.

— Basic Setup — ^

- Engine
- Tuning Preferences
- Cam/Crank
- Mass Airflow
- Injector Setup
- Basic Sensors
- DBW Tuning
- Set Throttle Range
- Ignition Sync
- Advanced Setup — v
- Outputs — ^
- Output Function Assignme...

Output Function Assignment

All of the standard assigned functions are preconfigured and do not need to be adjusted if the vehicle's wiring matches the AEM pinout chart.
 Most of the ECU's Low-Side (switched ground) outputs can be reconfigured by reassigning the x- and y-inputs of LS_Duty tables.
 Most of the ECU's High-Side (switched +12V) outputs can be reconfigured by reassigning the x- and y-inputs of 'HS_Table' tables.
 Porsche Expansion Low-Side (switched ground) outputs can be reconfigured by reassigning the x- and y-inputs of CAN_LS tables. These outputs are not PWM-able and can only be used as an on/off function.
 Porsche Expansion Relay Drivers (switched ground) outputs can be reconfigured by reassigning the x- and y-inputs of CAN_RelayCtrl tables. These outputs are not PWM-able and can only be used as an on/off function in low current relay control circuits.

.....

Low Side	High Side	Porsche Expansion Low Side	Porsche Expansion Relay Drivers	Porsche Start Enable
Function	Channel	Pin	Status	
CAN Lowside 0 Output Setup		3-31		
CAN Lowside 1 Output Setup	General Purpose	3-16		
CAN Lowside 2 Output Setup	VTEC_Active	3-1 & 3-26	OFF	

Pin Out...

— Basic Setup — ^

- Engine
- Tuning Preferences
- Cam/Crank
- Mass Airflow
- Injector Setup
- Basic Sensors
- DBW Tuning
- Set Throttle Range
- Ignition Sync
- Advanced Setup — v
- Outputs — ^
- Output Function Assignme...

Output Function Assignment

All of the standard assigned functions are preconfigured and do not need to be adjusted if the vehicle's wiring matches the AEM pinout chart.
 Most of the ECU's Low-Side (switched ground) outputs can be reconfigured by reassigning the x- and y-inputs of LS_Duty tables.
 Most of the ECU's High-Side (switched +12V) outputs can be reconfigured by reassigning the x- and y-inputs of 'HS_Table' tables.
 Porsche Expansion Low-Side (switched ground) outputs can be reconfigured by reassigning the x- and y-inputs of CAN_LS tables. These outputs are not PWM-able and can only be used as an on/off function.
 Porsche Expansion Relay Drivers (switched ground) outputs can be reconfigured by reassigning the x- and y-inputs of CAN_RelayCtrl tables. These outputs are not PWM-able and can only be used as an on/off function in low current relay control circuits.

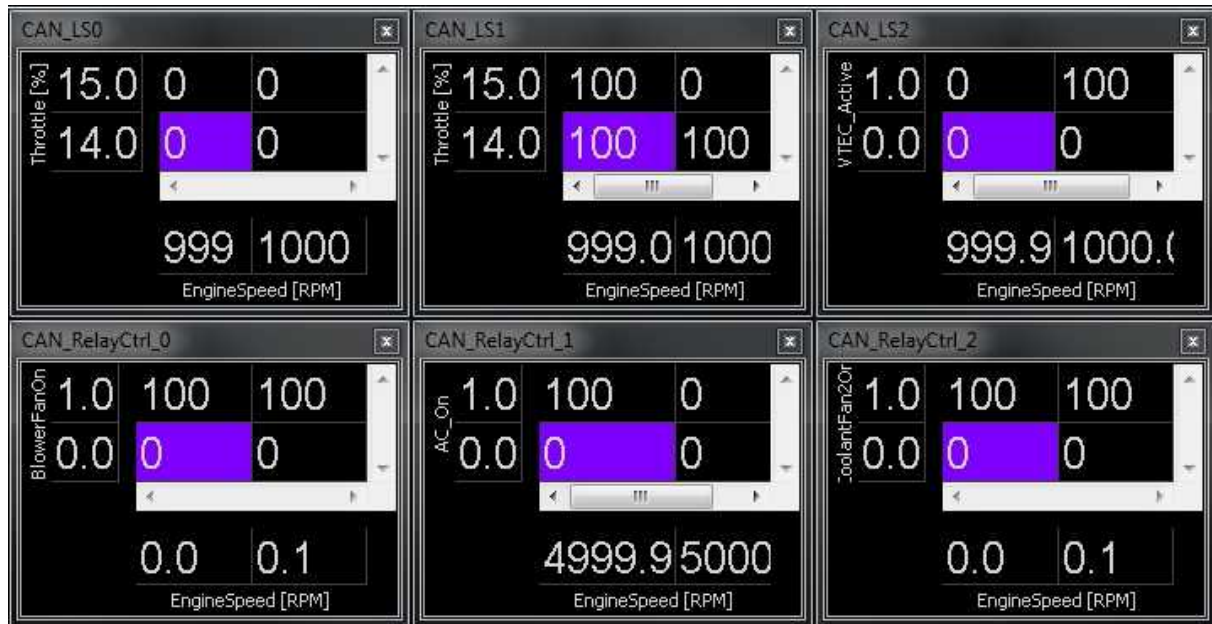
.....

Low Side	High Side	Porsche Expansion Low Side	Porsche Expansion Relay Drivers	Porsche Start Enable
Function	Channel	Pin	Status	
CAN Relay 0 Output Setup	BlowerFanOn	4-25	OFF	
CAN Relay 1 Output Setup	AC_On	4-27	OFF	
CAN Relay 2 Output Setup	CoolantFan2On	4-31	OFF	

Pin Out...

Although reconfigurable, the AEM base calibration has these expansion outputs setup as follows:

Output	Pin	Function
CAN_LS0	AEM Adapter, Porsche Header Side, Connector 3, Pin 31	Not Used, Available
CAN_LS1	AEM Adapter, Porsche Header Side, Connector 3, Pin 16	Electronic Bypass Valve Direct Control
CAN_LS2	AEM Adapter, Porsche Header Side, Connector 3, Pin 1 and Pin 26	Variocam Lo/Hi Cam Direct Control
CAN_RelayCtrl_0	AEM Adapter, Porsche Header Side, Connector 4, Pin 25	Engine Compartment Blower Fan Relay Control
CAN_RelayCtrl_1	AEM Adapter, Porsche Header Side, Connector 4, Pin 27	A/C Compressor Relay Control
CAN_Relay_Ctrl_2	AEM Adapter, Porsche Header Side, Connector 4, Pin 31	Coolant Fan Stage 3 Control



INFINITY EMS INSTALLATION

The following installation instructions are shown on a Porsche 996 Turbo coupe. Installation on a Porsche 996 Turbo convertible will vary.

Step 1

Open the hood and disconnect the battery.

Lower the rear seats and locate the factory sub-woofer

Carefully pull out the two plastic sub-woofer port trim pieces.



Step 2

Remove the two rear seat brackets



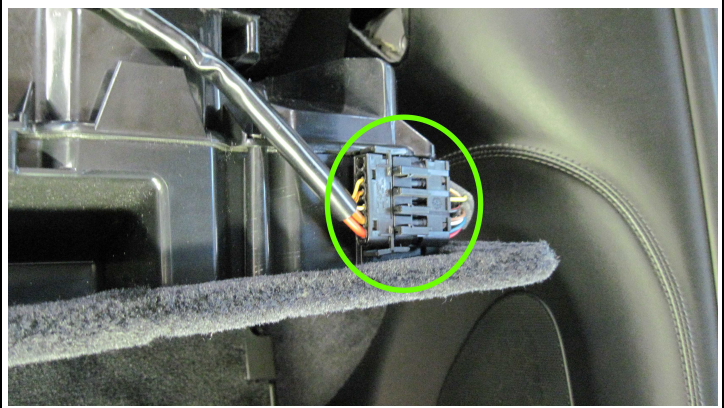
Step 3

Remove the two bolts below the subwoofer ports.



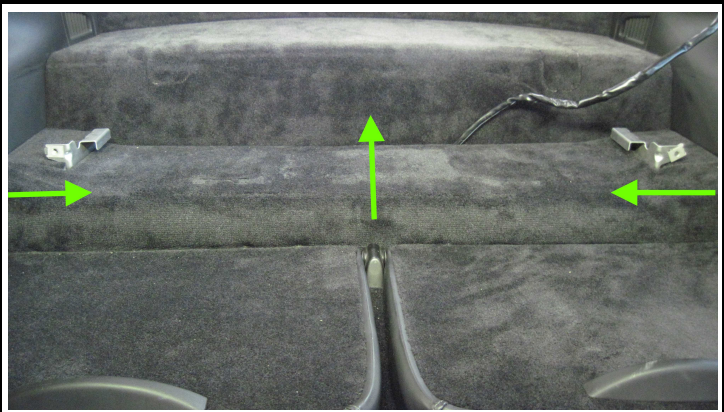
Step 4

Slide the subwoofer assembly forward, un-clip the power connector and remove the subwoofer.



Step 5

Pull the center of the carpet pad up while pulling the ends inward to remove the carpet pad, exposing the ECU shelves.



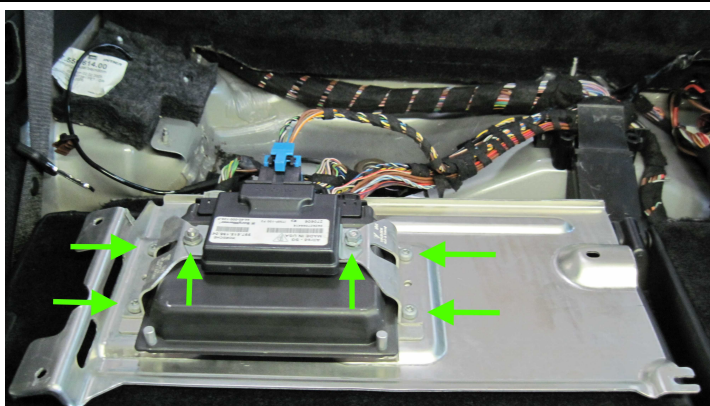
Step 6

Remove the five 10mm nuts fastening the ECU shelves to the car and flip them over, exposing the DME.



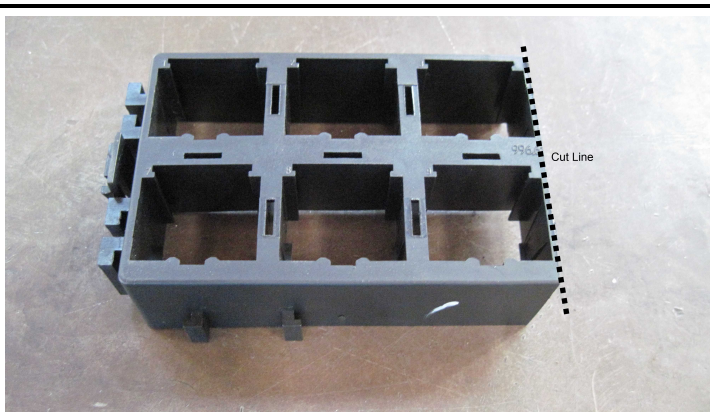
Step 7

Remove the four bolts and two nuts fastening the DME to the shelf. Remove the five electrical connectors to the DME and remove the DME.



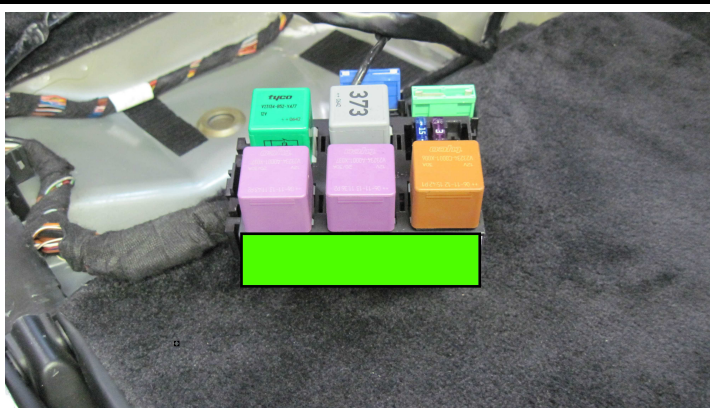
Step 8

To make room for the AEM Infinity, the relay carrier on the driver's side of the vehicle must be modified as much of the relay holder is unused. Remove the relays/fuses and cut the holder directly in half. Replacement relay holders can be purchased from Porsche for ~\$30 and the Porsche part number is 996.610.111.00. Relay configurations may vary depending on model year.



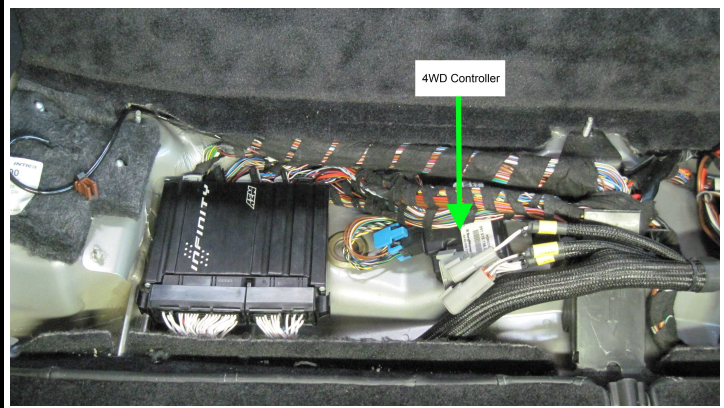
Step 9

Re-install the relays/fuses in the shown orientation and add a piece of the supplied velcro as shown. Relays may vary depending model year.



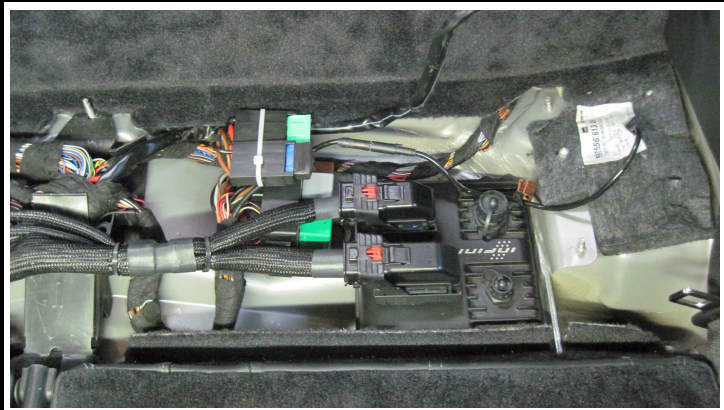
Step 10

Plug in both ends of the Infinity adapter in and affix the adapter to the vehicle with the supplied velcro.



Step 11

Install the Infinity and relay holder as shown using the supplied velcro.



Step 12

The finished install should look similar to this. Route USB/Logging/AUX/AEM Net cables/wires as desired. Re-install the aluminum shelf, carpet, and subwoofer in reverse order from removal.



PINOOTS

Porsche Pinouts

Pin	2001-2005 Porsche 996 Turbo	Adapter Pin	Infinity Pin	Hardware Reference	Function	Hardware Specification	Notes	
1	1	DME Relay, Terminal 15	A2-98, A2-106	C1-65	+12V Ignition Switch	Ignition Switch	10K Pulldown	Full time battery power must be available at C1-10 before this input is triggered.
	2	DME Relay, Terminal 30	A2-99, A2-100	C1-10	+12V R8C CPU	+12V Perm Power	Dedicated Power CPU	Full time battery power
	3	W-Wire	A2-114	---	---	---	---	---
	4	Ground, Electronics	A2-94, A2-95, A2-96, A2-97, A2-115, A2-116, A2-117	C1-30, C1-55, C1-60, C1-73, C2-3, C2-39, C2-40	GND	Power Ground	Power Ground	Battery ground
	5	Ground, Fuel Injectors	A2-94, A2-95, A2-96, A2-97, A2-115, A2-116, A2-117	C1-30, C1-55, C1-60, C1-73, C2-3, C2-39, C2-40	GND	Power Ground	Power Ground	Battery ground
	6	Ground, Output Stages	A2-94, A2-95, A2-96, A2-97, A2-115, A2-116, A2-117	C1-30, C1-55, C1-60, C1-73, C2-3, C2-39, C2-40	GND	Power Ground	Power Ground	Battery ground
	7	Throttle Motor Actuator + Open	A1-121	C1-54	Harness_HBridge0_1	HBridge0_1	5.0A max Throttle Control Hbridge Drive	+12V to open
	8	DME Relay, Terminal 87	A1-3, A1-4, A1-5	C1-61, C1-64	+12V	+12V	12 Volt Power From Relay	Relay must be controlled by +12V relay control signal from pin C1-29
	9	Throttle Motor Actuator - Close	A1-120	C1-53	Harness_HBridge0_0	HBridge0_0	5.0A max Throttle Control Hbridge Drive	+12V to close
2	1	O2 Sensor Heater B2S2	---	---	---	---	---	
	2	O2 Sensor Pump Current Regulator B1S1	A2-82	C1-5	UEGO 1 IA	UEGO 1 IA	UEGO 1 IA	O2 sensor 1 pump current regulator

3	---	---	---	---	---	---	---
4	---	---	---	---	---	---	---
5	O2 Sensor Pump Current Regulator B1S1	A2-83	C1-6	UEGO 1 IP	UEGO 1 IP	UEGO 1 IP	O2 sensor 1 pump current regulator
6	O2 Sensor Pump Current Regulator B2S1	A2-86	C2-48	UEGO 2 IA	UEGO 2 IA	UEGO 2 IA	O2 sensor 2 pump current regulator
7	O2 Sensor Heater B1S2	---	---	---	---	---	---
8	O2 Sensor Ground B2S2	---	---	---	---	---	---
9	O2 Sensor Ground B1S1	A2-84	C1-8	UEGO 1 VM	UEGO 1 VM	UEGO 1 VM	O2 sensor 1 ground
10	O2 Sensor Ground B2S1	A2-88	C2-45	UEGO 2 VM	UEGO 2 VM	UEGO 2 VM	O2 sensor 2 ground
11	O2 Sensor Ground B1S2	---	---	---	---	---	---
12	---	---	---	---	---	---	---
13	O2 Sensor Heater B2S1	A2-118	C2-49	UEGO 2 Heat	UEGO 2 Heat	UEGO 2 Heat	O2 sensor 2 heater
14	O2 Sensor Signal B2S2	---	---	---	---	---	---
15	O2 Sensor Signal B1S1	A2-85	C1-7	UEGO 1 UN	UEGO 1 UN	UEGO 1 UN	O2 sensor 1 signal
16	O2 Sensor Signal B2S1	A2-89	C2-46	UEGO 2 UN	UEGO 2 UN	UEGO 2 UN	O2 sensor 2 signal
17	O2 Sensor Signal B1S2	---	---	---	---	---	---
18	---	---	---	---	---	---	---
19	O2 Sensor Heater B1S1	A2-119	C1-4	UEGO 1 Heat	UEGO 1 Heat	UEGO 1 Heat	O2 sensor 1 heater
20	---	---	---	---	---	---	---
21	Engine Compartment Temp Sensor	A2-90	C2-16	Analog Temp 5	Airbox Temperature	2.49K pullup to 5V	Main input to blower fan control
22	5v Supply Mass Airflow Sensor	A2-91	C1-42	Sensor +5V	Sensor +5V	Regulated, fused +5V supply for sensor power	Analog sensor power
23	---	---	---	---	---	---	---
24	O2 Sensor Pump Current Regulator B2S1	A2-87	C2-47	UEGO 2 IP	UEGO 2 IP	UEGO 2 IP	O2 sensor 2 pump current regulator
3	1 Valve Lift Control B1	---	---	CAN Low side 2	Valve Lift Control B1	On/Off only low side switch, 6A max	Not PWM-able, see setup wizard for configuration
	2 Fuel Injector Cylinder 5	A1-65	C1-57	Injector 5	Injector 5	Saturated or peak and hold, 3A max continuous	Injector 5
	3 EVAP Purge	---	---	---	---	---	---
	4 Electronic Boost Control Solenoid	A1-63	C1-33	Low side 1	Boost Control	Low side switch, 4A max with internal flyback diode. Inductive load should NOT have full time power	Low side switch, 4A max with internal flyback diode. Inductive load should NOT have full time power
	5 Oil Temperature Sensor	A1-48	C1-68	Analog Temp 3	Oil Temperature	2.49K pullup to 5V	See setup wizard for configuration
	6	---	---	---	---	---	---
	7 5v Supply Charge Air Pressure & Oil Pressure Sensor	A1-28	C1-41	Sensor +5V	Sensor +5V	Regulated, fused +5V supply for sensor power	Analog sensor power

8	Signal, Throttle Position Sensor 2	A1-49	C2-21	Analog 16	Throttle Position 2	100k pullup to 5V	Do not connect signals referenced to +12V as this can permanently damage the ECU. Monitor DBW1_TPSB [%]
9	Ground, Mass Airflow Sensor	A1-12	C1-19	Sensor Ground	Sensor Ground	Dedicated analog ground	Dedicated analog ground
10	5v Supply Throttle Actuation	A1-13	C2-24	Sensor +5V	Sensor +5V	Regulated, fused +5V supply for sensor power	Analog sensor power
11	Triggering of Secondary Air Pump Relay (Terminal 85)	---	---	---	---	---	---
12	Signal, Camshaft Position Sensor B1	A1-9	C1-22	Digital 1	Camshaft Position Sensor B1	10K pullup to 12V	See setup wizard for options
13	---	---	---	---	---	---	---
14	Secondary Air Valve	---	---	---	---	---	---
15	Fuel Injector Cylinder 3	A1-26	C1-59	Injector 3	Injector 3	Saturated or peak and hold, 3A max continuous	Injector 3
16	Electronic Bypass Valve	---	---	CAN Low side 1	Electronic Bypass Valve	On/Off only low side switch, 6A max	Not PWM-able, see setup wizard for configuration
17	Ground, Sensors	A1-50	C1-20	Sensor Ground	Sensor Ground	Dedicated analog ground	Dedicated analog ground
18	Signal, Camshaft Position Sensor 2	A1-8	C1-23	Digital 1	Camshaft Position Sensor B1	10K pullup to 12V	See setup wizard for options
19	Alternator Feedback	A1-1	---	---	---	---	---
20	---	---	---	---	---	---	---
21	---	---	---	---	---	---	---
22	Engine Coolant Temperature Sensor	A-51	C1-66	Analog Temp 1	Coolant Temperature	2.49K pullup to 5V	See setup wizard for configuration
23	Signal, Mass Airflow B1	A-52	C2-33	Analog 20	Mass Airflow Sensor B1	100k pullup to 5V	Do not connect signals referenced to +12V as this can permanently damage the ECU.
24	Signal, Throttle Position Sensor 1	A1-53	C1-35	Analog 7	Throttle Position 1	100k pullup to 5V	Do not connect signals referenced to +12V as this can permanently damage the ECU. Monitor DBW1_TPSA [%]
25	Ground, Throttle Position Sensors 1&2	A1-50	C1-20	Sensor Ground	Sensor Ground	Dedicated analog ground	Dedicated analog ground
26	Valve Lift Control B2	---	---	CAN Low side 2	Valve Lift Control B2	On/Off only low side switch, 6A max	Not PWM-able, see setup wizard for configuration
27	Fuel Injector Cylinder 4	A1-25	C1-58	Injector 4	Injector 4	Saturated or peak and hold, 3A max continuous	Injector 4
28	Fuel Injector Cylinder 6	A1-27	C1-56	Injector 6	Injector 6	Saturated or peak and hold, 3A max continuous	Injector 6
29	---	---	---	---	---	---	---
30	---	---	---	---	---	---	---
31	---	---	---	---	---	---	---
32	Ground, Shielded	A1-50	C1-20	Sensor Ground	Sensor Ground	Dedicated analog ground	Dedicated analog ground
33	---	---	---	---	---	---	---

34	Intake Air Temperature Sensor	A1-70	C1-67	Analog Temp 2	Intake Air Temperature	2.49K pullup to 5V	See setup wizard for configuration	
35	---	---	---	---	---	---	---	
36	Input, Knock Sensor 2	A1-61	C1-28	Knock 2	Knock 2	Dedicated knock signal processor	See setup wizard for configuration	
37	Ground, Knock Sensor 2	A1-11	C2-30	Sensor Ground	Sensor Ground	Dedicated analog ground	Dedicated analog ground	
38	---	---	---	---	---	---	---	
39	Charge Air Pressure Sensor	A1-68	C1-36	Analog 8	MAP sensor	100k pullup to 5V	Sensor is pre-throttle blade and will not respond like a manifold referenced sensor.	
40	Fuel Injector Cylinder 2	A1-65	C1-62	Injector 2	Injector 2	Saturated or peak and hold, 3A max continuous	Injector 2	
41	Fuel Injector Cylinder 1	A1-7	C1-63	Injector 1	Injector 1	Saturated or peak and hold, 3A max continuous	Injector 1	
42	---	---	---	---	---	---	---	
43	---	---	---	---	---	---	---	
44	---	---	---	---	---	---	---	
45	Crank VR+	A1-46	C1-45	VR0+	Crank VR+	Differential variable reluctance zero cross detection	See setup wizard for configuration	
46	Crank VR-	A1-47	C1-46	VR0-	Crank VR-	Differential variable reluctance zero cross detection	See setup wizard for configuration	
47	---	---	---	---	---	---	---	
48	---	---	---	---	---	---	---	
49	Input, Knock Sensor 1	A1-62	C1-27	Knock 1	Knock 1	Dedicated knock signal processor	See setup wizard for configuration	
50	Ground, Knock Sensor 1	A1-11	C2-30	Sensor Ground	Sensor Ground	Dedicated analog ground	Dedicated analog ground	
51	---	---	---	---	---	---	---	
52	ABS Speed Sig	---	---	---	---	---	---	
4	1 Interlock Clutch Switch	---	---	Clutch Switch	Clutch Switch	N/A	This is transmitted via CAN from the adapter to the Infinity	
	2	---	---	---	---	---	---	
	3	---	---	---	---	---	---	
	4 Coolant Fan Stage 1	A1-22	C1-17	Low side 2	Coolant Fan 1	Low side switch, 4A max, NO internal flyback diode	See setup wizard for configuration	
	5	---	---	---	---	---	---	
	6	---	---	---	---	---	---	
	7	Ground, Pedal Sensor 1	A1-58	C2-31	Sensor Ground	Sensor Ground	Dedicated analog ground	Dedicated analog ground
	8	Signal, APP Sensor 1	A1-21	C2-13	Analog 18	Accelerator Position 1	100k pullup to 5V	Do not connect signals referenced to +12V as this can permanently damage the ECU. Monitor DBW_APP1 [%]
	9	5v Supply, Pedal Sensor 1	A1-20	C2-23	Sensor +5V	Sensor +5V	Regulated, fused +5V supply for sensor power	Analog sensor power
	10	Fuel Pump 1 Relay Control	A1-2	C1-34	Low side 0	Fuel Pump 1 Control	Low side switch, 4A max, NO internal flyback diode	See setup wizard for configuration
	11	---	---	---	---	---	---	---
	12	Ground, Pedal Sensor 2	A1-14	C2-32	Sensor Ground	Sensor Ground	Dedicated analog ground	Dedicated analog ground

	13	Signal, APP Sensor 2	A1-15	C2-14	Analog 19	Accelerator Position 2	100k pullup to 5V	Do not connect signals referenced to +12V as this can permanently damage the ECU. Monitor DBW_APP2 [%]
	14	5v Supply, Pedal Sensor 2	A1-19	C2-22	Sensor +5V	Sensor +5V	Regulated, fused +5V supply for sensor power	Analog sensor power
	15	Ground, Differential Pressure Sensor	A1-14	C2-32	Sensor Ground	Sensor Ground	Dedicated analog ground	Dedicated analog ground
	16	Crash Signal	---	---	---	---	---	---
	17	Speed Signal Output	---	---	---	---	---	---
	18	---	---	---	---	---	---	---
	19	---	---	---	---	---	---	---
	20	Coolant Fan Stage 2	A1-41	C2-44	Low side 7	Coolant Fan 1	Low side switch, 4A max, NO internal flyback diode	See setup wizard for configuration
	21	Signal, Differential Pressure Sensor	A1-16	---	---	---	---	---
	22	---	---	---	---	---	---	---
	23	---	---	---	---	---	---	---
	24	---	---	---	---	---	---	---
	25	Engine Compartment Fan Relay Control	---	---	CAN Relay Control 0	CAN Relay Control 0	Low side relay driver, 500mA max	See setup wizard for configuration
	26	DME Relay Control	A1-55	C1-29	+12V Relay Control	+12V Relay Control	0.7A max ground sink for external relay control	Will activate at key on and at key off according to the configuration settings.
	27	A/C Compressor Relay Control	---	---	CAN Relay Control 1	CAN Relay Control 1	Low side relay driver, 500mA max	See setup wizard for configuration
	28	---	---	---	---	---	---	---
	29	---	---	---	---	---	---	---
	30	EVAP Canister Shutoff Valve	---	---	---	---	---	---
	31	Coolant Fan Stage 3	---	---	CAN Relay Control 2	CAN Relay Control 2	Low side relay driver, 500mA max	See setup wizard for configuration
	32	---	---	---	---	---	---	---
	33	Start Enable	---	---	Start Enable	Start Enable	Low side relay driver, 500mA max	See setup wizard for configuration
	34	Air Conditioning Pressure Switch	A1-56	---	---	---	---	---
	35	---	---	---	---	---	---	---
	36	CAN Hi	A1-72	C2-41	CAN B +	CAN B +	Dedicated high speed CAN tranceiver	Porsche CAN bus communication
	37	CAN Lo	A1-73	C2-42	CAN B -	CAN B -	Dedicated high speed CAN tranceiver	Porsche CAN bus communication
	38	---	---	---	---	---	---	---
	39	---	---	---	---	---	---	---
	40	---	---	---	---	---	---	---
5	1	Ignition Coil 6	A1-81	C1-15	Ignition Coil 6	Ignition Coil 6	25 mA max source current	0-5V Falling edge fire. DO NOT connect directly to coil primary. Must use an ignitor OR CDI that accepts a FALLING edge fire signal.

2	Ignition Coil 4	A1-79	C1-11	Ignition Coil 4	Ignition Coil 4	25 mA max source current	0-5V Falling edge fire. DO NOT connect directly to coil primary. Must use an ignitor OR CDI that accepts a FALLING edge fire signal.
3	Ignition Coil 2	A2-112	C1-13	Ignition Coil 2	Ignition Coil 2	25 mA max source current	0-5V Falling edge fire. DO NOT connect directly to coil primary. Must use an ignitor OR CDI that accepts a FALLING edge fire signal.
4	Ignition Coil 5	A1-80	C1-16	Ignition Coil 5	Ignition Coil 5	25 mA max source current	0-5V Falling edge fire. DO NOT connect directly to coil primary. Must use an ignitor OR CDI that accepts a FALLING edge fire signal.
5	Ground	A2-94, A2-95, A2-96, A2-97, A2-115, A2-116, A2-117	C1-30, C1-55, C1-60, C1-73, C2-3, C2-39, C2-40	GND	Power Ground	Power Ground	Battery ground
6	Ignition Coil 1	A1-111	C1-14	Ignition Coil 1	Ignition Coil 1	25 mA max source current	0-5V Falling edge fire. DO NOT connect directly to coil primary. Must use an ignitor OR CDI that accepts a FALLING edge fire signal.
7	Camshaft Adjustment, Bank 1	A1-23	C1-18	Low side 3	VVC1A	Low side switch, 4A max with internal flyback diode. Inductive load should NOT have full time power	Low side switch, 4A max with internal flyback diode. Inductive load should NOT have full time power
8	Camshaft Adjustment, Bank 2	A1-24	C1-2	Low side 5	VVC1B	Low side switch, 4A max with internal flyback diode. Inductive load should NOT have full time power	Low side switch, 4A max with internal flyback diode. Inductive load should NOT have full time power
9	Ignition Coil 3	A2-113	C1-12	Ignition Coil 3	Ignition Coil 3	25 mA max source current	0-5V Falling edge fire. DO NOT connect directly to coil primary. Must use an ignitor OR CDI that accepts a FALLING edge fire signal.

Infinity Pinouts

Infinity Pin	Porsche Pin	Adapter Pin	12P AUX Pin	Hardware Reference	Function	Hardware Specification	Notes
C1-1	---	---	AUX 6	Lowside 4	Available	Lowside switch, 1.7A max, NO internal flyback diode.	Available, see setup wizard for configuration
C1-2	5-8	A1-24	---	Lowside 5	VVC1B	Lowside switch, 4A max with internal flyback diode. Inductive load should NOT have full time power	Lowside switch, 4A max with internal flyback diode. Inductive load should NOT have full time power
C1-3	---	---	---	Lowside 6	Available	Lowside switch, 4A max with internal flyback diode. Inductive load should NOT have full time power	Lowside switch, 4A max with internal flyback diode. Inductive load should NOT have full time power
C1-4	2-19	A2-119	---	UEGO 1 Heat	UEGO 1 Heat	UEGO 1 Heat	O2 sensor 1 heater
C1-5	2-2	A2-82	---	UEGO 1 IA	UEGO 1 IA	UEGO 1 IA	O2 sensor 1 pump current regulator
C1-6	2-5	A2-83	---	UEGO 1 IP	UEGO 1 IP	UEGO 1 IP	O2 sensor 1 pump current regulator
C1-7	2-15	A2-85	---	UEGO 1 UN	UEGO 1 UN	UEGO 1 UN	O2 sensor 1 signal
C1-8	2-9	A2-84	---	UEGO 1 VM	UEGO 1 VM	UEGO 1 VM	O2 sensor 1 ground
C1-9	---	---	FLASH 1	Flash Enable	Flash Enable	Flash Enable	+12V Flash Enable
C1-10	1-2	A2-99, A2-100	---	+12V R8C CPU	+12V Perm Power	Dedicated Power CPU	Full time battery power
C1-11	5-2	A1-79	---	Ignition Coil 4	Ignition Coil 4	25 mA max source current	0-5V Falling edge fire. DO NOT connect directly to coil primary. Must use an ignitor OR CDI that accepts a FALLING edge fire signal.
C1-12	5-9	A2-113	---	Ignition Coil 3	Ignition Coil 3	25 mA max source current	0-5V Falling edge fire. DO NOT connect directly to coil primary. Must use an ignitor OR CDI that accepts a FALLING edge fire signal.
C1-13	5-3	A2-112	---	Ignition Coil 2	Ignition Coil 2	25 mA max source current	0-5V Falling edge fire. DO NOT connect directly to coil primary. Must use an ignitor OR CDI that accepts a FALLING edge fire signal.
C1-14	5-6	A1-111	---	Ignition Coil 1	Ignition Coil 1	25 mA max source current	0-5V Falling edge fire. DO NOT connect directly to coil primary. Must use an ignitor OR CDI that accepts a FALLING edge fire signal.
C1-15	5-1	A1-81	---	Ignition Coil 6	Ignition Coil 6	25 mA max source current	0-5V Falling edge fire. DO NOT connect directly to coil primary. Must use an ignitor OR CDI that accepts a FALLING edge fire signal.
C1-16	5-4	A1-80	---	Ignition Coil 5	Ignition Coil 5	25 mA max source current	0-5V Falling edge fire. DO NOT connect directly to coil primary. Must use an ignitor OR CDI that accepts a FALLING edge fire signal.
C1-17	4-4	A1-22	---	Lowside 2	Coolant Fan 1 Control	Lowside switch, 4A max, NO internal flyback diode	See setup wizard for configuration
C1-18	5-7	A1-23	---	Lowside 3	VVC1A	Lowside switch, 4A max with internal flyback diode. Inductive load should NOT have full time	Lowside switch, 4A max with internal flyback diode. Inductive load should NOT have full time

						power	power
C1-19	3-9	A1-12	---	Sensor Ground	Sensor Ground	Dedicated analog ground	Dedicated analog ground
C1-20	3-17, 3-25, 3-32	A1-50	---	Sensor Ground	Sensor Ground	Dedicated analog ground	Dedicated analog ground
C1-21	---	---	---	Digital 0	---	10K pullup to 12V	See setup wizard for options.
C1-22	3-12	A1-9	---	Digital 1	Camshaft Position Sensor B1	10K pullup to 12V	See setup wizard for options
C1-23	3-18	A1-8	---	Digital 2	Camshaft Position Sensor B2	10K pullup to 12V	See setup wizard for options
C1-24	---	---	---	Digital 3	Available	10K pullup to 12V. Will work with ground or floating switches.	This duty cycle reflects turbo vane actual position and under normal conditions, should reflect the control signal duty cycle.
C1-25	---	A1-56	AUX 11	Digital 4	Available	10K pullup to 12V. Will work with ground or floating switches.	This duty cycle reflects turbo vane actual position and under normal conditions, should reflect the control signal duty cycle.
C1-26	---	---	AUX 7	Digital 5	Available	10K pullup to 12V. Will work with ground or floating switches.	Available, see setup wizard for configuration
C1-27	3-49	A1-62	---	Knock 1	Knock 1	Dedicated knock signal processor	See setup wizard for configuration
C1-28	3-36	A1-61	---	Knock 2	Knock 2	Dedicated knock signal processor	See setup wizard for configuration
C1-29	4-26	A1-55	---	+12V Relay Control	+12V Relay Control	0.7A max ground sink for external relay control	Will activate at key on and at key off according to the configuration settings.
C1-30	1-4, 1-5, 1-6, 5-5	A2-94, A2-95, A2-96, A2-97, A2-115, A2-116, A2-117	---	GND	Power Ground	Power Ground	Battery ground
C1-31	---	---	AEM NET 2	AEM Net CAN L	Dedicated High Speed CAN Transceiver	AEM Net CAN L	Recommend twisted pair (one twist per 2") with terminating resistor. Contact AEM for additional information.
C1-32	---	---	AEM NET 1	AEM Net CAN H	Dedicated High Speed CAN Transceiver	AEM Net CAN H	Recommend twisted pair (one twist per 2") with terminating resistor. Contact AEM for additional information.
C1-33	3-4	A1-63	---	Lowside 1	Boost Control	Lowside switch, 1.7A max with internal flyback diode. Inductive load should NOT have full time power.	See setup wizard for configuration
C1-34	4-10	A1-2	---	Lowside 0	Fuel Pump 1 Control	Lowside switch, 4A max, NO internal flyback diode	See setup wizard for configuration
C1-35	3-24	A1-53	---	Analog 7	Throttle Position 1	100k pullup to 5V	Do not connect signals referenced to +12V as this can permanently damage the ECU. Monitor DBW1_TPSA [%]

C1-36	3-39	A1-68	AUX 5	Analog 8	MAP sensor	100k pullup to 5V	Sensor is pre-throttle blade and will not respond like a manifold referenced sensor.
C1-37	---	---	AUX 4	Analog 9	Fuel Pressure	100K pullup to 5V	Available, see setup wizard for configuration
C1-38	---	---	---	Analog 10	Baro Sensor	100K pullup to 5V	Available, see setup wizard for configuration
C1-39	---	---	---	Analog 11	Shift Switch	100K pullup to 5V	Available, see setup wizard for configuration
C1-40	---	---	AUX 6	Analog 12	ModeSwitch	100K pullup to 5V	Available, see setup wizard for configuration
C1-41	3-7	A1-28	---	Sensor +5V	Sensor +5V	Regulated, fused +5V supply for sensor power	Analog sensor power
C1-42	2-22	A2-91	---	Sensor +5V	Sensor +5V	Regulated, fused +5V supply for sensor power	Analog sensor power
C1-43	---	---	---	Highside 1	Highside Switch	0.7A max, High Side Solid State Relay	Available, see setup wizard for configuration
C1-44	---	---	AUX 8	Highside 0	Highside Switch	0.7A max, High Side Solid State Relay	Available, see setup wizard for configuration
C1-45	3-45	A1-46	---	VR0+	Crank VR+	Differential variable reluctance zero cross detection	See setup wizard for configuration
C1-46	3-46	A1-47	---	VR0-	Crank VR-	Differential variable reluctance zero cross detection	See setup wizard for configuration
C1-47	---	---	---	VR1-	---	Differential variable reluctance zero cross detection	See setup wizard for configuration
C1-48	---	---	---	VR1+	---	Differential variable reluctance zero cross detection	See setup wizard for configuration
C1-49	---	---	---	VR2+	Non Driven Left Wheel Speed Sensor	Differential variable reluctance zero cross detection	See setup wizard for configuration
C1-50	---	---	---	VR2-	Non Driven Left Wheel Speed Sensor	Differential variable reluctance zero cross detection	See setup wizard for configuration
C1-51	---	---	---	VR3-	Driven Left Wheel Speed Sensor	Differential variable reluctance zero cross detection	See setup wizard for configuration
C1-52	---	---	---	VR3+	Driven Left Wheel Speed Sensor	Differential variable reluctance zero cross detection	See setup wizard for configuration
C1-53	1-9	A1-120	---	Harness_HBridge0_0	HBridge0_0	5.0A max Throttle Control Hbridge Drive	+12V to close
C1-54	1-7	A1-121	---	Harness_HBridge0_1	HBridge0_1	5.0A max Throttle Control Hbridge Drive	+12V to open
C1-55	1-4, 1-5, 1-6, 5-5	A2-94, A2-95, A2-96, A2-97, A2-115, A2-116, A2-117	---	GND	Power Ground	Power Ground	Battery ground
C1-56	3-28	A1-27	---	Injector 6	Injector 6	Saturated or peak and hold, 3A max continuous	Injector 6
C1-57	3-2	A1-65	---	Injector 5	Injector 5	Saturated or peak and hold, 3A max continuous	Injector 5
C1-58	3-27	A1-25	---	Injector 4	Injector 4	Saturated or peak and hold, 3A max continuous	Injector 4
C1-59	3-15	A1-26	---	Injector 3	Injector 3	Saturated or peak and hold, 3A max continuous	Injector 3

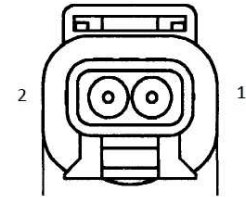
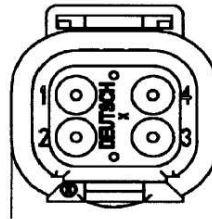
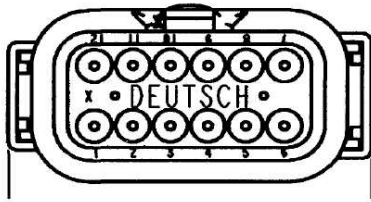
C1-60	1-4, 1-5, 1-6, 5-5	A2-94, A2-95, A2-96, A2-97, A2-115, A2-116, A2-117	---	GND	Power Ground	Power Ground	Battery ground
C1-61	1-8	A1-3, A1-4, A1-5	---	+12V	+12V	12 Volt Power From Relay	Relay must be controlled by +12V relay control signal from pin C1-29
C1-62	3-40	A1-6	---	Injector 2	Injector 2	Saturated or peak and hold, 3A max continuous	Injector 2
C1-63	3-41	A1-7	---	Injector 1	Injector 1	Saturated or peak and hold, 3A max continuous	Injector 1
C1-64	1-8	A1-3, A1-4, A1-5	---	+12V	+12V	12 Volt Power From Relay	Relay must be controlled by +12V relay control signal from pin C1-29
C1-65	1-1	A2-98, A2-106	---	+12V Ignition Switch	Ignition Switch	10K Pulldown	Full time battery power must be available at C1-10 before this input is triggered.
C1-66	3-22	A-51	---	Analog Temp 1	Coolant Temperature	2.49K pullup to 5V	See setup wizard for configuration
C1-67	3-34	A1-70	---	Analog Temp 2	Intake Air Temperature	2.49K pullup to 5V	See setup wizard for configuration
C1-68	3-5	A1-48	---	Analog Temp 3	Oil Temperature	2.49K pullup to 5V	See setup wizard for configuration
C1-69	---	---	---	Stepper 2A	Stepper 2A	Programmable Stepper Driver, up to 28V and $\pm 1.4A$	Be sure that each internal coil of the stepper motor are properly paired with the 1A/1B and 2A/2B ECU outputs. Supports Bi-Polar stepper motors only.
C1-70	---	---	---	Stepper 1A	Stepper 1A	Programmable Stepper Driver, up to 28V and $\pm 1.4A$	Be sure that each internal coil of the stepper motor are properly paired with the 1A/1B and 2A/2B ECU outputs. Supports Bi-Polar stepper motors only.
C1-71	---	---	---	Stepper 2B	Stepper 2B	Programmable Stepper Driver, up to 28V and $\pm 1.4A$	Be sure that each internal coil of the stepper motor are properly paired with the 1A/1B and 2A/2B ECU outputs. Supports Bi-Polar stepper motors only.
C1-72	---	---	---	Stepper 1B	Stepper 1B	Programmable Stepper Driver, up to 28V and $\pm 1.4A$	Be sure that each internal coil of the stepper motor are properly paired with the 1A/1B and 2A/2B ECU outputs. Supports Bi-Polar stepper motors only.
C1-73	1-4, 1-5, 1-6, 5-5	A2-94, A2-95, A2-96, A2-97, A2-115, A2-116, A2-117	---	GND	Power Ground	Power Ground	Battery ground
C2-1	---	---	---	Harness_HBridge1_0	HBridge1_0	5.0A max Throttle Control Hbridge Drive	+12V to close
C2-2	---	---	---	Harness_HBridge1_1	HBridge1_1	5.0A max Throttle Control Hbridge Drive	+12V to open
C2-3	1-4, 1-5, 1-6, 5-5	A2-94, A2-95, A2-96, A2-97, A2-115, A2-116, A2-117	---	GND	Power Ground	Power Ground	Battery ground

C2-4	---	---	---	Injector 7	Injector 7	Saturated or peak and hold, 3A max continuous	Injector 7
C2-5	---	---	---	Injector 8	Injector 8	Saturated or peak and hold, 3A max continuous	Injector 8
C2-6	---	---	---	Injector 9	Injector 9	Saturated or peak and hold, 3A max continuous	Injector 9
C2-7	---	---	---	Injector 10	Injector 10	Saturated or peak and hold, 3A max continuous	Injector 10
C2-8	---	---	---	GND	Power Ground	Power Ground	Battery ground
C2-9	---	---	---	+12V	+12V	12 Volt Power From Relay	Relay must be controlled by +12V relay control signal from pin C1-29
C2-10	---	---	---	Injector 11	Injector 11	Saturated or peak and hold, 3A max continuous	Injector 11
C2-11	---	---	---	Injector 12	Injector 12	Saturated or peak and hold, 3A max continuous	Injector 12
C2-12	---	---	---	Analog 17	Available	100k pullup to 5V	Do not connect signals referenced to +12V as this can permanently damage the ECU.
C2-13	4-8	A1-21	---	Analog 18	Accelerator Position 1	100k pullup to 5V	Do not connect signals referenced to +12V as this can permanently damage the ECU. Monitor DBW_APP1 [%]
C2-14	4-13	A1-15	---	Analog 19	Accelerator Position 2	100k pullup to 5V	Do not connect signals referenced to +12V as this can permanently damage the ECU. Monitor DBW_APP2 [%]
C2-15	---	---	AUX 9	Analog Temp 4	Charge Out Temperature	2.49K pullup to 5V	Available, see setup wizard for configuration
C2-16	2-21	A2-90	---	Analog Temp 5	Airbox Temperature	2.49K pullup to 5V	Main input to blower fan control
C2-17	---	---	---	Analog Temp 6	Fuel Temperature	2.49K pullup to 5V	Available
C2-18	---	---	---	Analog 13	Oil Pressure	100k pullup to 5V	See setup wizard for configuration
C2-19	---	---	---	Analog 14	Traction Control Mode/Sensitivity	100k pullup to 5V	See setup wizard for configuration
C2-20	---	---	---	Analog 15	Exhaust Back Pressure	100k pullup to 5V	See setup wizard for configuration
C2-21	3-8	A1-49	---	Analog 16	Throttle Position 2	100k pullup to 5V	Do not connect signals referenced to +12V as this can permanently damage the ECU. Monitor DBW1_TPSB [%]
C2-22	4-14	A1-20	---	Sensor +5V	Sensor +5V	Regulated, fused +5V supply for sensor power	Analog sensor power
C2-23	4-9	A1-19	---	Sensor +5V	Sensor +5V	Regulated, fused +5V supply for sensor power	Analog sensor power
C2-24	3-10	A1-13	---	Sensor +5V	Sensor +5V	Regulated, fused +5V supply for sensor power	Analog sensor power
C2-25	---	---	---	VR5+	Driven Right Wheel Speed Sensor	Differential variable reluctance zero cross detection	See setup wizard for configuration
C2-26	---	---	---	VR5-	Driven Right Wheel Speed Sensor	Differential variable reluctance zero cross detection	See setup wizard for configuration
C2-27	---	---	---	VR4-	Non Driven Right Wheel	Differential variable reluctance zero cross	See setup wizard for configuration

					Speed Sensor	detection	
C2-28	---	---	---	VR4+	Non Driven Right Wheel Speed Sensor	Differential variable reluctance zero cross detection	See setup wizard for configuration
C2-29	---	---	---	Lowside 9	Available	Lowside switch, 4A max with internal flyback diode, 2.2K 12V pullup. Inductive load should NOT have full time power	Available, see setup wizard for configuration
C2-30	3-37, 3-50	A1-11	---	Sensor Ground	Sensor Ground	Dedicated analog ground	Dedicated analog ground
C2-31	4-7	A1-58	---	Sensor Ground	Sensor Ground	Dedicated analog ground	Dedicated analog ground
C2-32	4-12	A1-14	---	Sensor Ground	Sensor Ground	Dedicated analog ground	Dedicated analog ground
C2-33	3-23	A-52	---	Analog 20	Mass Airflow Sensor B1	100k pullup to 5V	Do not connect signals referenced to +12V as this can permanently damage the ECU.
C2-34	---	---	---	Analog 21	3 Step Enable/TPS 2B	100k pullup to 5V	See setup wizard for configuration
C2-35	---	---	---	Analog 22	USB Log Switch	100k pullup to 5V	See setup wizard for configuration
C2-36	---	---	---	Analog 23	Charge Out Pressure	100k pullup to 5V	See setup wizard for configuration
C2-37	---	---	AUX 12	Digital 6	N2O Switch/Staged Switch/MAF/Start Enable	No Pullup	Available, see setup wizard for configuration
C2-38	---	---	---	Digital 7	N2O Switch/Staged Switch/MAF/Start Enable	No Pullup	Available, see setup wizard for configuration
C2-39	1-4, 1-5, 1-6, 5-5	A2-94, A2-95, A2-96, A2-97, A2-115, A2-116, A2-117	---	GND	Power Ground	Power Ground	Battery ground
C2-40	1-4, 1-5, 1-6, 5-5	A2-94, A2-95, A2-96, A2-97, A2-115, A2-116, A2-117	---	GND	Power Ground	Power Ground	Battery ground
C2-41	4-36	A1-72	---	CAN B +	CAN B +	Dedicated high speed CAN transceiver	Porsche CAN bus communication
C2-42	4-37	A1-73	---	CAN B -	CAN B -	Dedicated high speed CAN transceiver	Porsche CAN bus communication
C2-43	---	A1-63	AUX 10	Lowside 8	Available	Lowside switch, 4A max with internal flyback diode. Inductive load should NOT have full time power	Lowside switch, 4A max with internal flyback diode. Inductive load should NOT have full time power
C2-44	4-20	A1-41	---	Lowside 7	Coolant Fan 2	Lowside switch, 1.7A max with internal flyback diode. Inductive load should NOT have full time power.	Available, see setup wizard for configuration
C2-45	2-10	A2-88	---	UEGO 2 VM	UEGO 2 VM	UEGO 2 VM	O2 sensor 2 ground
C2-46	2-16	A2-89	---	UEGO 2 UN	UEGO 2 UN	UEGO 2 UN	O2 sensor 2 signal
C2-47	2-24	A2-87	---	UEGO 2 IP	UEGO 2 IP	UEGO 2 IP	O2 sensor 2 pump current regulator
C2-48	2-6	A2-86	---	UEGO 2 IA	UEGO 2 IA	UEGO 2 IA	O2 sensor 2 pump current regulator
C2-49	2-13	A2-118	---	UEGO 2 Heat	UEGO 2 Heat	UEGO 2 Heat	O2 sensor 2 heater

C2-50	---	---	---	+12V R8C CPU	+12V Perm Power	Dedicated Power CPU	Full time battery power
C2-51	---	---	---	Ignition Coil 7	Ignition Coil 7	25 mA max source current	0-5V Falling edge fire. DO NOT connect directly to coil primary. Must use an ignitor OR CDI that accepts a FALLING edge fire signal.
C2-52	---	---	---	Ignition Coil 8	Ignition Coil 8	25 mA max source current	0-5V Falling edge fire. DO NOT connect directly to coil primary. Must use an ignitor OR CDI that accepts a FALLING edge fire signal.
C2-53	---	---	---	Ignition Coil 9	Ignition Coil 9	25 mA max source current	0-5V Falling edge fire. DO NOT connect directly to coil primary. Must use an ignitor OR CDI that accepts a FALLING edge fire signal.
C2-54	---	---	---	Ignition Coil 10	Ignition Coil 10	25 mA max source current	0-5V Falling edge fire. DO NOT connect directly to coil primary. Must use an ignitor OR CDI that accepts a FALLING edge fire signal.
C2-55	---	---	---	Highside 2	Highside Switch	0.7A max, High Side Solid State Relay	Available, see setup wizard for configuration
C2-56	---	---	---	Highside 3	Highside Switch	0.7A max, High Side Solid State Relay	Available, see setup wizard for configuration

AUX Connector Pinouts



PIN	DESTINATION	DESCRIPTION	PIN	DESTINATION	DESCRIPTION	PIN	DESTINATION	DESCRIPTION
1	A1-31	Sensor Ground	1	C1-32	CAN A+	1	C1-9	Flash Enable
2	A1-29	+5V Ref	2	C1-31	CAN A-	2	A2-100	Permanent +12V Power
3	A1-3	+12V From Relay	3	SP-2	+12V Relay Power			
4	C1-37	Analog 9	4	SP-1	Ground			
5	C1-36	Analog 8						
6	C1-40	Analog 12						
7	C1-26	Digital 5						
8	C1-44	Highside 0						
9	C2-15	Analog Temp 4						
10	C1-43	Lowside 8						
11	C1-25	Digital 4						
12	C2-37	Digital 6						

A = Infinity Adapter Connector
 C = Infinity ECU Connector

A = Infinity Adapter Connector
 SP = Splice

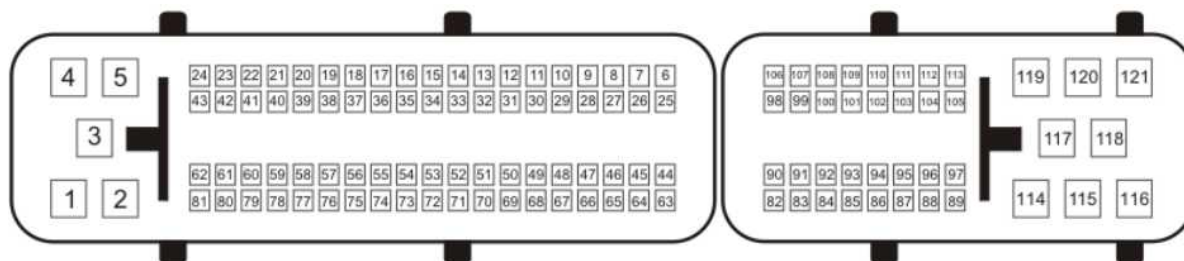
A = Infinity Adapter Connector
 C = Infinity ECU Connector

Porsche Pin Numbering

7	8	9	19	20	21	22	23	24	40	41	42	43	44	45	46	47	48	49	50	51	52	31	32	33	34	35	36	37	38	39	40	7	8	9
			13	14	15	16	17	18	27	28	29	30	31	32	33	34	35	36	37	38	39	21	22	23	24	25	26	27	28	29	30			
4	5	6	2						3														4						4	5	6			
1	2	3	7	8	9	10	11	12	14	15	16	17	18	19	20	21	22	23	24	25	26	11	12	13	14	15	16	17	18	19	20	1	2	3
			1	2	3	4	5	6	1	2	3	4	5	6	7	8	9	10	11	12	13	1	2	3	4	5	6	7	8	9	10			

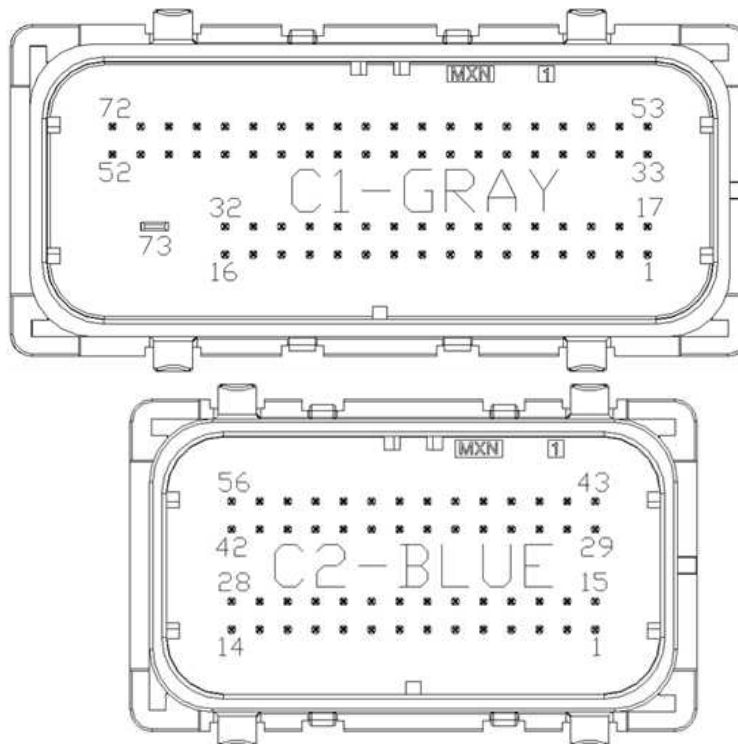
Porsche Connectors Viewed from Wire Side

Adapter Pin Numbering



Adapter Connectors Viewed from Wire Side

Infinity Pin Numbering



AEM Infinity Connectors Viewed from Wire Side

12 MONTH LIMITED WARRANTY

Advanced Engine Management Inc. warrants to the consumer that all AEM High Performance products will be free from defects in material and workmanship for a period of twelve (12) months from date of the original purchase. Products that fail within this 12-month warranty period will be repaired or replaced at AEM's option, when determined by AEM that the product failed due to defects in material or workmanship. This warranty is limited to the repair or replacement of the AEM part. In no event shall this warranty exceed the original purchase price of the AEM part nor shall AEM be responsible for special, incidental or consequential damages or cost incurred due to the failure of this product. Warranty claims to AEM must be transportation prepaid and accompanied with dated proof of purchase. This warranty applies only to the original purchaser of product and is non-transferable. All implied warranties shall be limited in duration to the said 12-month warranty period. Improper use or installation, accident, abuse, unauthorized repairs or alterations voids this warranty. AEM disclaims any liability for consequential damages due to breach of any written or implied warranty on all products manufactured by AEM. Warranty returns will only be accepted by AEM when accompanied by a valid Return Merchandise Authorization (RMA) number. Product must be received by AEM within 30 days of the date the RMA is issued.

UEGO oxygen sensors are considered wear items and are not covered under warranty.

Please note that before AEM can issue an RMA for any electronic product, it is first necessary for the installer or end user to contact the EMS tech line at 1-800-423-0046 to discuss the problem. Most issues can be resolved over the phone. Under no circumstances should a system be returned or a RMA requested before the above process transpires.

AEM will not be responsible for electronic products that are installed incorrectly, installed in a non-approved application, misused, or tampered with.

Any AEM electronics product can be returned for repair if it is out of the warranty period. There is a minimum charge of \$50.00 for inspection and diagnosis of AEM electronic parts. Parts used in the repair of AEM electronic components will be extra. AEM will provide an estimate of repairs and receive written or electronic authorization before repairs are made to the product.